



<b>APPRENTICE OF THE YEAR</b>	
<b>RESOURCE</b>	NATIONAL PRACTICAL PROJECT
<b>COMPETITION YEAR</b>	2025
<b>PROJECT</b>	TRAIN

**APPRENTICE OF THE YEAR**

<b>RESOURCE</b>	NATIONAL PRACTICAL PROJECT
<b>COMPETITION YEAR</b>	2025
<b>PROJECT</b>	TRAIN

# Apprentice Practical Tool List – National



Please read the tools list carefully as you need to make sure you bring all of these with you to the practical challenge.

Only bring what is on the list, **nothing else will be allowed.**

<b>HOLES SAW &amp; BITS</b>	<b>Use this box to tick you have each tool.</b>
Drill bits, up to 13mm (for wood)	
Countersunk bit suitable for 8g & 10g screws	
64mm hole saw	
#2 square drive bit and #5 hex bit - needs to fit battery impact driver	
<b>APRON WITH THE FOLLOWING</b>	
Apron	
Knife (to sharpen pencil)	
Pencil	
Hammer	
20mm Chisel	
Nail punch	
Rule	
square that does 90° and 45	
Tape measure	
Calculator or you can use your phone	
<b>HAND TOOLS</b>	
12mm Chisel	
Block Plane – if you do not have one you can borrow one	
#2 hand screwdriver	
Doggy Bar	
Timber Rasp both fine and course	
2 off Quick Grip Clamps or "F" Clamps (if possible, a jaw of 200mm)	
General Purpose Hand Saw	
Sanding block	
Drawing Compass OR dividers	
<b>HEALTH &amp; SAFETY GEAR</b>	
Earmuffs	
Safety glasses	
Any medication needed	
Safety shoes/boots – if possible wear the Steel Blue ones you won at the National Event	
Safety Gloves	
Shorts or pants (it may get hot in the venue)	
Optional knee pads	
Dustpan and brush	

## APPRENTICE OF THE YEAR

RESOURCE	NATIONAL PRACTICAL PROJECT
COMPETITION YEAR	2025
PROJECT	TRAIN

# Apprentice Project Instructions – National



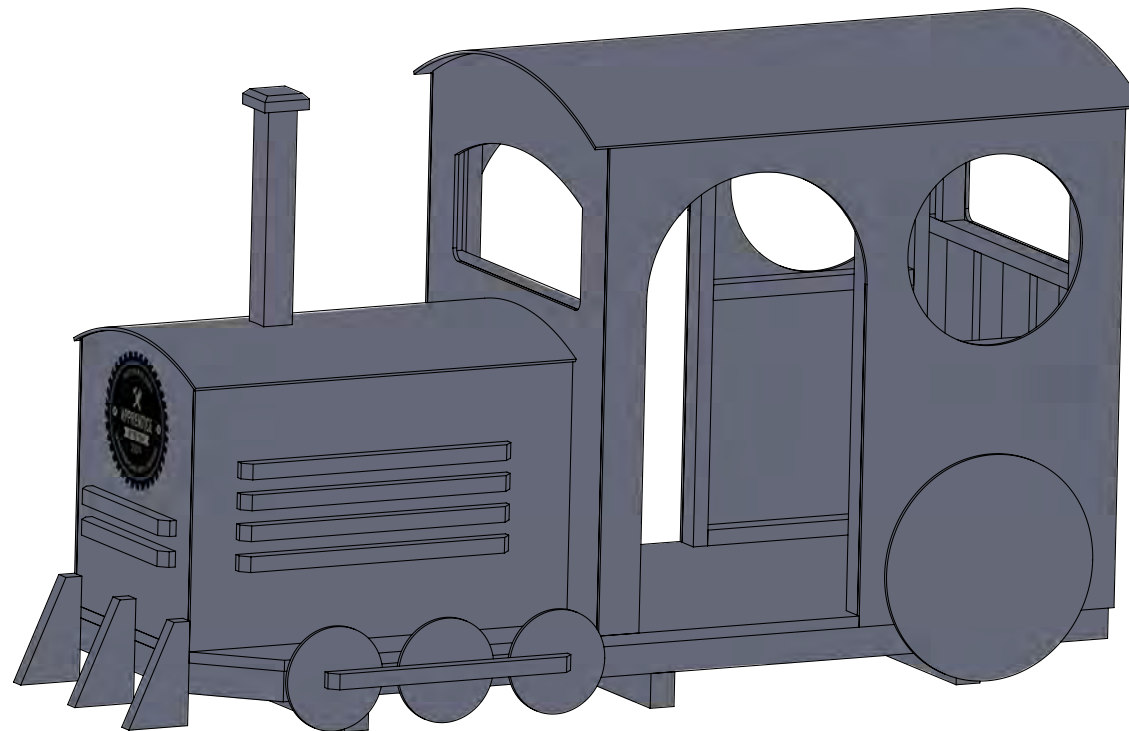
## GENERAL

Assume the floor structure is level
Check material sizes as may vary plan dimensions and written instructions
Corners/edges to be sanded
Studs are equally spaced
Purlin/rafters are equally spaced
Lower corners of the front and rear windows formed using 64mm hole saw, top of windows run parallel with cab roof by 257mm
Use 9mm ply for roofs and 12mm wall cladding
Cladding to align with underside of decking.
Ply fixed using 45mm x 8g screws centred on framing members, evenly spaced but no greater than 200mm centres.
Chimney stack is set back from the front of the engine roof by 382mm
The chimney stack cap is to finish 45mm down from the cab roof.
Fronts wheels to align with the corner of the base, wheels spaced 50mm apart
Wheels fitted with the bottoms 90mm below the floor joist line, rear wheel centred below window
Engine roof ply overhangs 20mm on sides and 10mm at front.
Cab ply overhangs 50mm front and rear and 10mm on sides
Side windows align with top of door and centred between the door and the rear of the cap
45mm x 45mm engine fins to have a 25mm 45 degree cut at each end
Front engine fins 524mm long.
Side engine fins set back 140mm from the engine front, fins spaced 45mm apart.
Cow catcher wedges align with decking corners and 90mm below joists
Front side wheels to align with the decking corner

## APPRENTICE OF THE YEAR

RESOURCE	NATIONAL PRACTICAL PROJECT
COMPETITION YEAR	2025
PROJECT	TRAIN

**CARTERS**  
Your Building Partner

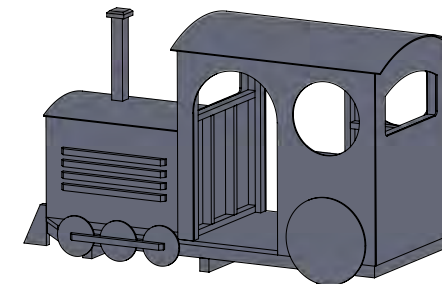
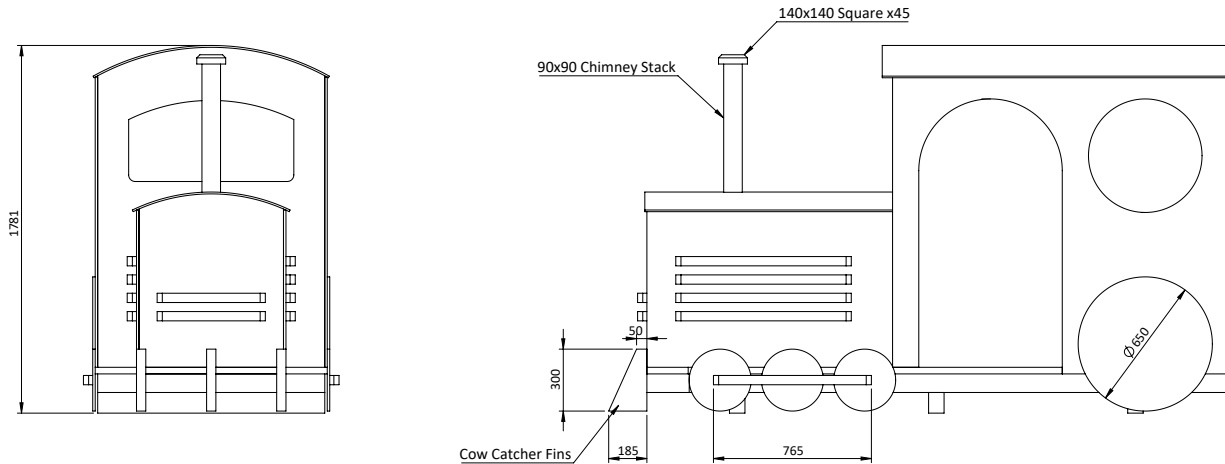


# Train

APPRENTICE OF THE YEAR 2025 - Finals

## APPRENTICE OF THE YEAR

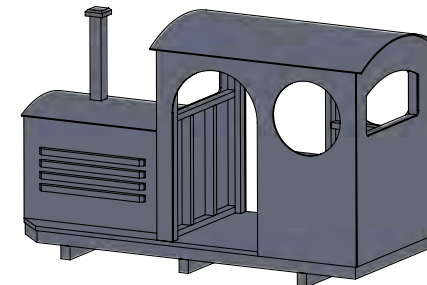
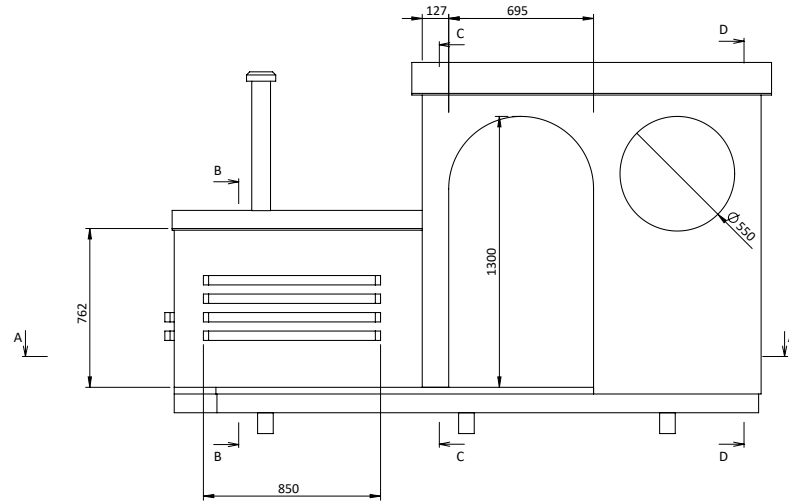
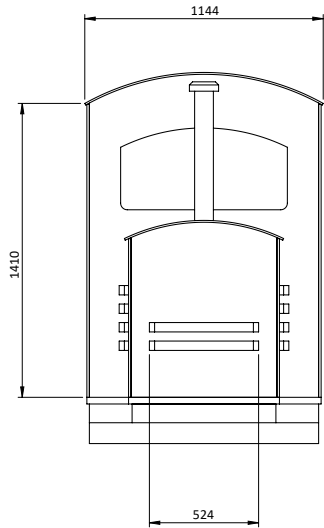
RESOURCE	NATIONAL PRACTICAL PROJECT
COMPETITION YEAR	2025
PROJECT	TRAIN



**Train - Finishing**  
APPRENTICE OF THE YEAR 2025 - Finals

**APPRENTICE OF THE YEAR**

RESOURCE	NATIONAL PRACTICAL PROJECT
COMPETITION YEAR	2025
PROJECT	TRAIN

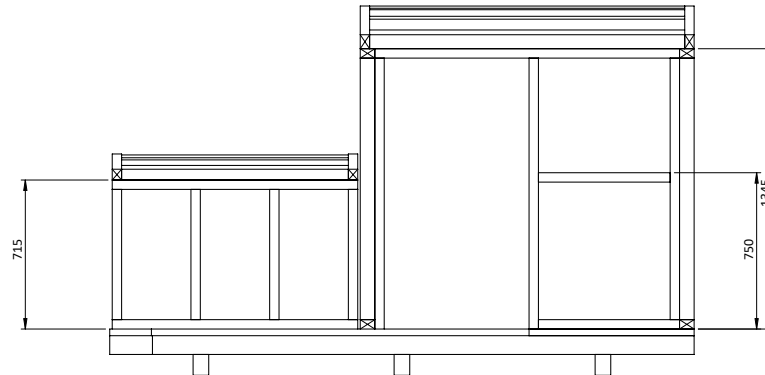
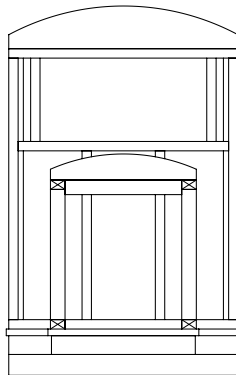
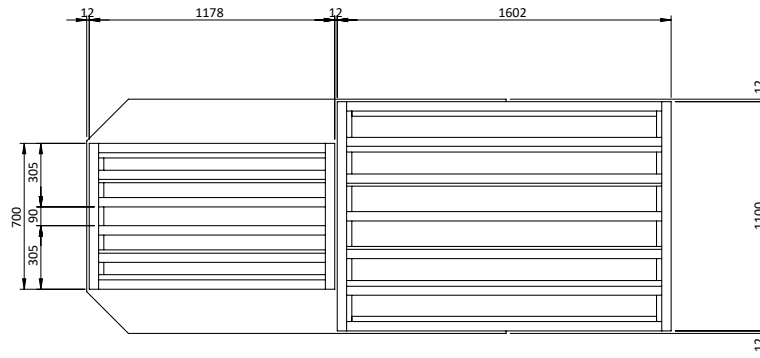


**Train - Cladding**

APPRENTICE OF THE YEAR 2025 - Finals

## APPRENTICE OF THE YEAR

RESOURCE	NATIONAL PRACTICAL PROJECT
COMPETITION YEAR	2025
PROJECT	TRAIN

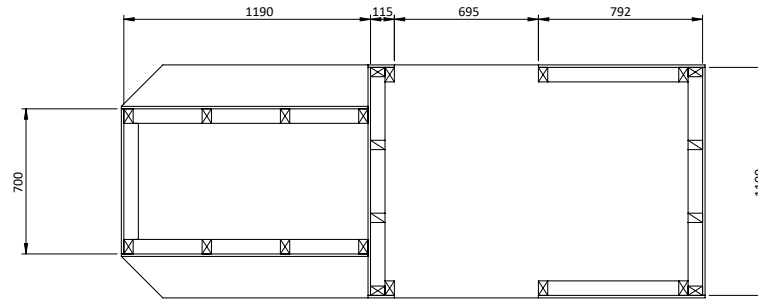


## Train - Framing

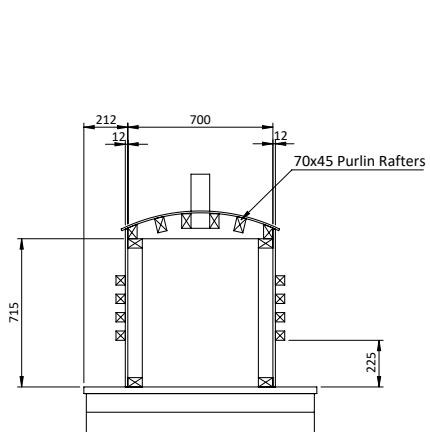
APPRENTICE OF THE YEAR 2025 - Finals

## APPRENTICE OF THE YEAR

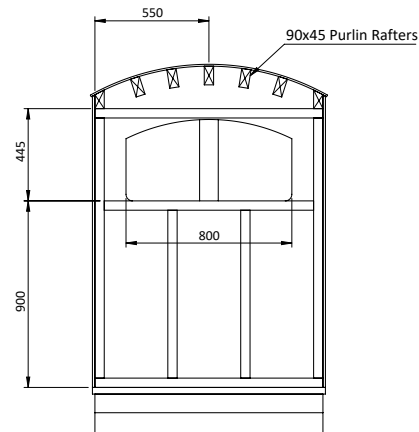
RESOURCE	NATIONAL PRACTICAL PROJECT
COMPETITION YEAR	2025
PROJECT	TRAIN



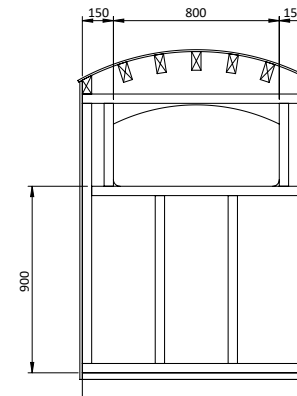
SECTION A-A  
Stud, Jack and BP Setout.



SECTION B-B  
Nose Framing



SECTION C-C  
Cab Front Frame



SECTION D-D  
Cab Rear Frame

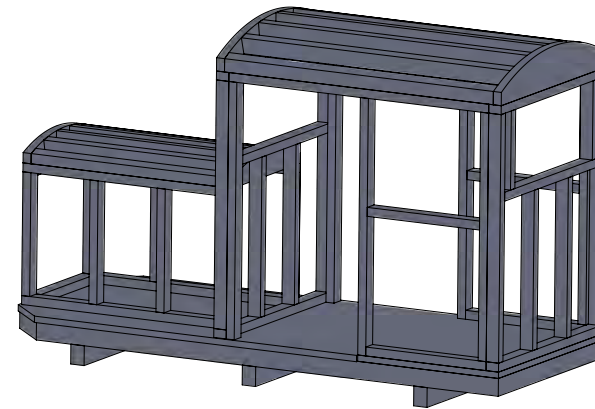
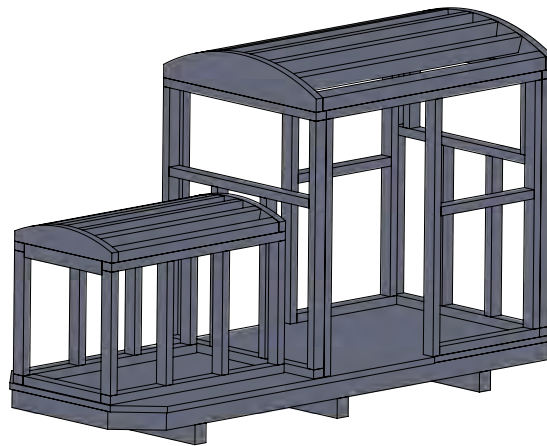
# Train - Sections

APPRENTICE OF THE YEAR 2025 - Finals

## APPRENTICE OF THE YEAR

RESOURCE	NATIONAL PRACTICAL PROJECT
COMPETITION YEAR	2025
PROJECT	TRAIN

**CARTERS**  
Your Building Partner

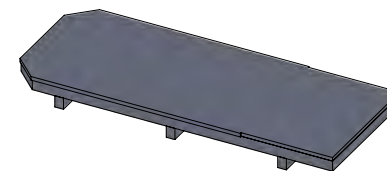
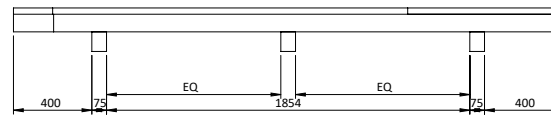
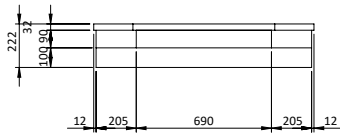
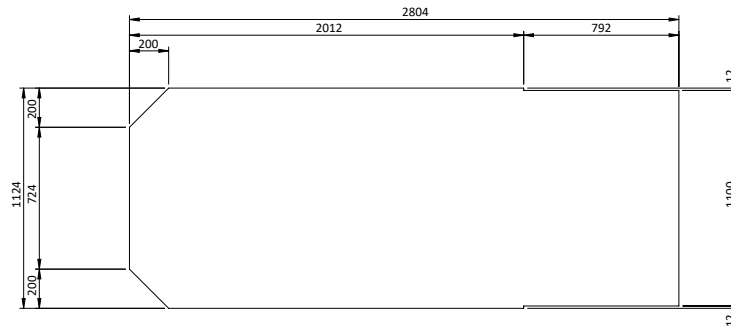


## Train - 3D Framing Views

APPRENTICE OF THE YEAR 2025 - Finals

## APPRENTICE OF THE YEAR

RESOURCE	NATIONAL PRACTICAL PROJECT
COMPETITION YEAR	2025
PROJECT	TRAIN



## Train - Base

APPRENTICE OF THE YEAR 2025 - Finals