

Offsite^{NZ}

The heart of innovative construction



CONSTRUCTIVE FORUM 2022

25-26 AUGUST 2022, ROTORUA

Ben Drake – OffsiteNZ Board Deputy Chair

bdrake@rcp.co.nz



OFFSITE NZ BLUEPRINT ACTION PLAN



ADVOCACY

We seek to influence an environment conducive to offsite manufacturing (OSM)



EDUCATION

We inform, collate & disseminate credible data to support evidence based decision-making.



COLLABORATION

We enable connections with & within the offsite manufacturing supply chain.

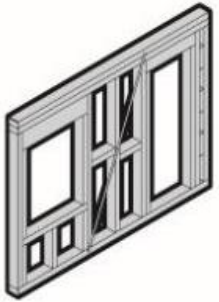


LEADERSHIP

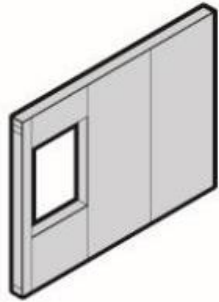
We provide leadership to effect change and show courage in turbulent times.

Offsite NZ seek meaningful industry partnerships to raise quality and productivity within New Zealand's built environment and the entire construction sector.

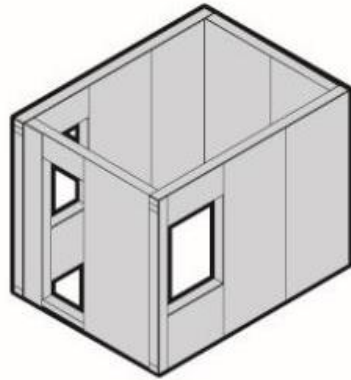
WHAT OFFSITE IN NEW ZEALAND LOOKS LIKE



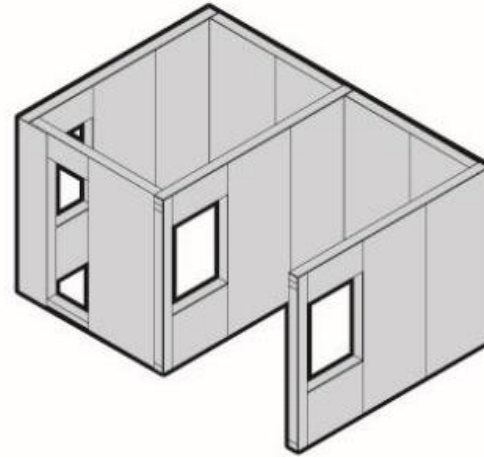
Component



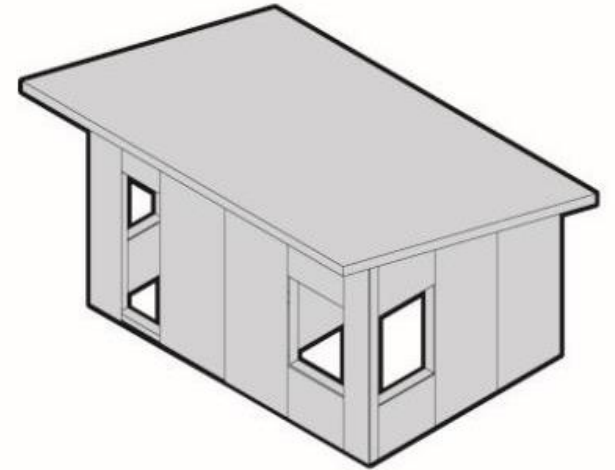
Panel



Volume



Hybrid
(Pod + panel)



**Complete
building**



BENEFITS OF OFFSITE CONSTRUCTION



Recyclable construction
and less site wastage



Early cost certainty and
reduced risk



Ability to produce full scale,
working mock-ups for review



Construction materials delivered to
& stored in the factory reducing risk
of damage/loss



Early integration of room
M&E (pre-installed and
commissioned in the factory)



Significantly shorter
construction programme



Early occupation and return
on capital investment



Low risk to client & contractor due to
off-site manufacture ahead of site
works



Health & safety issues are
more easily addressed



Light-weight construction
potentially reduces
foundation & podium costs



Ability to 'template' all
designs and specifications for
generic types of buildings



Local labour can be used for
preparatory site works and fit
out



WHAT ABOUT COST?



Is it cheaper? “Yeah...nah.” Scale is needed!



Monetise speed, quality & sustainability



IT'S NOT NEW





MYTHS



This is a policy failing not a building failure



Traditional builders will lose their jobs



Every house will be like a Toyota Corolla!



AUTOMOTIVE REALITY: NOT JUST COROLLAS



OFFSITE WILL GROW AND DIVERSIFY CONSTRUCTION

New skills are needed which will suit the next generation:

- Digital Design, DfMA, factory environment, logistics, assembly, lifting, climbing, fixing.

Demand for traditional skills and construction will remain!

New, complementary ways need to be embraced to evolve the Construction Sector

It really is both onsite and offsite



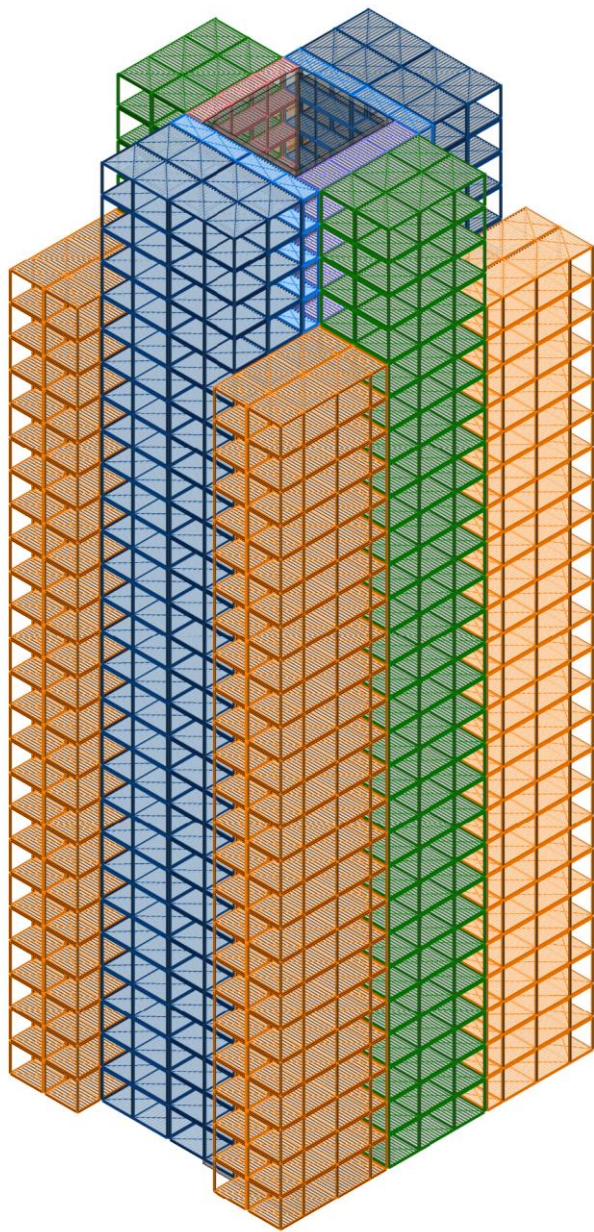
INTERNATIONAL LEARNINGS



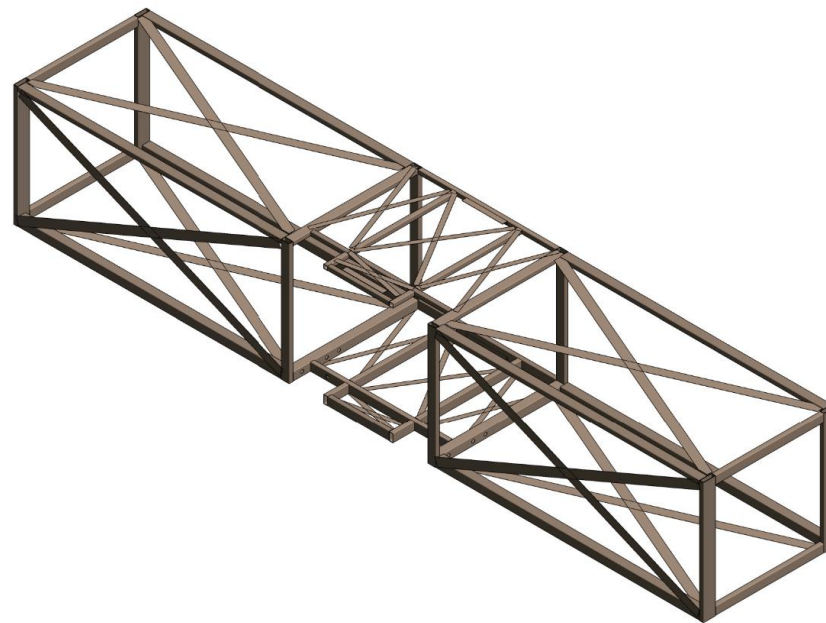
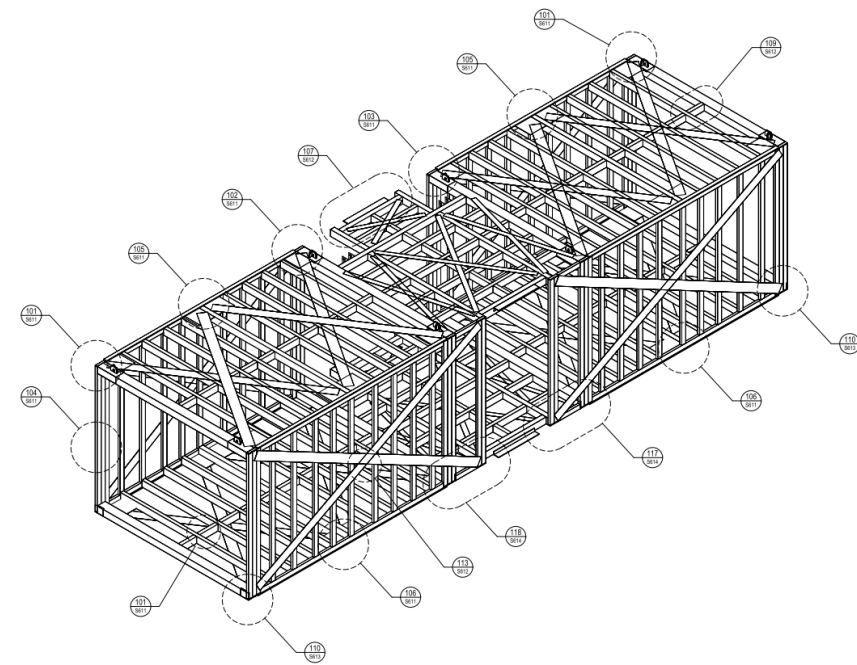


COURTESY OF ILKE HOMES





Real-life Lego!



PROGRESS IN NZ





04 / 04

Customise **any design** to
suit you



**GREENER,
SMARTER & FASTER**





Builtsmart Transportable Homes

Welcome Home

More Information →







We're redefining housing, with you.

Challenging the way New Zealand builds houses by creating flexible homes,
so you can build what you need, when you need it.



NZ ISSUES



**FINANCE &
INSURANCE**



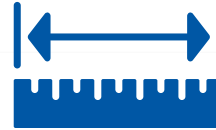
CONSENTING



**PROCUREMENT AT
SCALE**



**CAPABILITY & SKILLS:
DfMA**



STANDARDISATION



**LOGISTICS:
MOVING, LIFTING AND
ASSEMBLY**

Does not mean boring!



THE OFFSITE LANDSCAPE IS FINDING SUPPORT

- Building Amendment Bill – MCM Scheme to drive easier consenting (like Multiproof)
- Government Procurement Guidelines – A lever to drive the private sector
- Building for Climate Change
- Review of Vocational Education
- Construction Sector Accord.



Policy is one thing, putting it into practice is another



WHAT IT BOILS DOWN TO...

- As for Climate Change, only a few people will do things differently “out of the good of their hearts”
- Government/regulatory levers need to be pulled to drive change via the “bottom line.”
For example:
 - Share risk with the private sector to “take the plunge” into offsite
 - Legislation and procurement rules, such as PMV in the UK

Once offsite solutions are known, and are proven to be successful, the private sector will follow and capitalism with take over!

Policy is one thing, putting it into practice is another



Q&A



Ben Drake

bdrake@rcp.co.nz

