



NEW ZEALAND  
COMMERCIAL  
PROJECT AWARDS

# 2025 Entry Guide

SHOWCASE YOUR  
OUTSTANDING  
COMMERCIAL  
CONSTRUCTION  
TEAM AND THE  
PROJECTS THEY  
BROUGHT TO LIFE









# WELCOME

## TO THE 2025 NEW ZEALAND COMMERCIAL PROJECT AWARDS

This prestigious awards programme sets the benchmark for commercial construction in New Zealand and celebrates collaboration and innovation across the building industry.

What sets these awards apart is that they focus on recognising the contribution of the whole project team, the people who brought these amazing projects to life, rather than just the building itself.

Every year we are impressed by the scope, calibre and innovation of the projects entered. The entries reflect the scale and diversity of commercial construction work being done across the country and show the industry has much to be proud of.

We are looking forward to seeing what our industry's exceptional teams have achieved and to celebrating these achievements in the 2025 New Zealand Commercial Project Awards.



**Ankit Sharma**  
**Chief Executive Officer**  
Registered Master Builders Association



**Darrell Trigg**  
**Chairman**  
New Zealand Commercial Project Awards

**ENTRIES OPEN**



**16 AUGUST 2024 –  
31 OCTOBER 2024**

# WHY ENTER?

- To celebrate, recognise, and thank the team who made your project happen. This includes everyone from the building owners, architects, designers, engineers, quantity surveyors through to the contractors themselves.
- Showcase your project team's capability and quality of work to potential clients, the industry, and beyond.
- Network and celebrate with the wider industry at the Awards Gala – an evening not to be missed.
- There are awards to suit all teams and projects no matter what the budget or size.

Let's celebrate the collaboration and innovation of the entire project team.

## CELEBRATE THE STARS IN YOUR TEAM

### EXPOSURE

The awards are supported by a comprehensive promotional programme including media and PR, advertising, social media, editorials and features on the Commercial Project Awards website: [commercialprojectawards.co.nz](https://commercialprojectawards.co.nz).

### IN THE MEDIA

There were over **3 million opportunities** for people to hear about the 2024 Commercial Project Awards in the news.

### SOCIAL MEDIA REACH

More than **990,000 people** saw the 2024 Commercial Project Awards on our social media channels.







# OUR SPONSORS

A huge thank you to our family of sponsors whose ongoing support means we are able to shine a light on the best of New Zealand construction.



HEALTH PROJECT



ENVIRONMENTAL AND  
SUSTAINABLE AWARD



COMMERCIAL PROJECT



RESIDENTIAL PROJECT



EDUCATION PROJECT

# SHOW YOUR PRIDE IN YOUR PROJECT

The awards are based on the collaboration of the project team, innovation, quality and how you overcome the challenges of the project together. It is not about the size of the project or the budget.

## PLAN

### ENTRIES OPEN ON FRIDAY 16 AUGUST 2024.



It's time to start planning your entry and talking to the wider project team.

These awards are open to all NZ based commercial construction project partners including: contractors, architects, building owners, engineers and quantity surveyors etc. **You do not need to be a member of Registered Master Builders to enter.**

Got questions about the competition or a potential entry? Call or email us. We're always happy to help.

**Ph:** 04 385 8999

**Email:**

info@commercialprojectawards.co.nz



Entries must not have been completed earlier than **31 October 2022** and must have a **Certificate of Practical Completion** before entries close on 31 October 2024.

## SUBMIT

### ENTRIES CLOSE ON THURSDAY 31 OCTOBER 2024.



Enter at  
**commercialprojectawards.co.nz**

Each entry must include the **construction company**, the **owner** and the **designer** and we encourage you to include other team members such as **engineers, quantity surveyors, etc.**

The Commercial Project Awards are all about celebrating the collective efforts of our building professionals.

### ENTRY FEES

#### Projects under \$3 million in contract value:

\$1250 + GST per entry, includes professional photography fee.

#### Projects over \$3 million in contract value:

\$1770 + GST per entry, includes professional photography fee.

**Multi entry discount: For all third and subsequent entries a 15% discount will be applied.**

## IMPRESS

### JUDGING TAKES PLACE FROM FEBRUARY 2025 TO APRIL 2025.



They'll be looking at the collaboration, quality, and innovation of your project – there will also be interviews with the team so you can demonstrate how you worked together to deliver an amazing result.

All entries are judged by a panel of two experienced construction industry judges. Judging includes a site visit and an interview with team members.



✓ **TEAMWORK**

✓ **QUALITY**

✓ **INNOVATION**

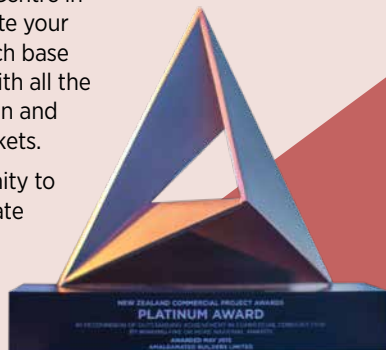


## CELEBRATE

### IT'S TIME TO CELEBRATE!

After judging, you can sit back and relax until it's time to get the team together on 16 May 2025 at the Viaduct Events Centre in Auckland to celebrate your project. We will touch base closer to the time with all the evening's information and how to purchase tickets.

It's a great opportunity to meet up and celebrate with the industry.



## PROMOTE

### DISPLAY YOUR QUALITY MARKS AND TELL THE WORLD ABOUT YOUR SUCCESS. WE WILL BE!

And of course, start thinking about your entries for 2026...



### TO FIND OUT MORE

To find out more information about the awards, and the entry and judging process, visit: [commercialprojectawards.co.nz](https://commercialprojectawards.co.nz) or contact:

**Ph:** 04 385 8999

**Email:** [info@commercialprojectawards.co.nz](mailto:info@commercialprojectawards.co.nz)



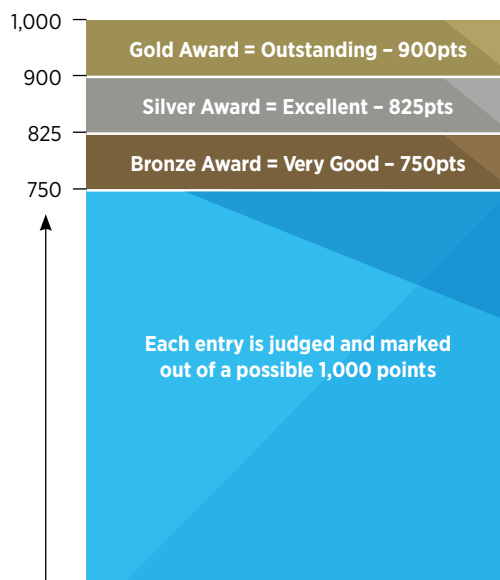
# QUALITY MARKS

The New Zealand Commercial Project Awards are an exciting opportunity for you to promote your business, celebrate the work of your team and grow your profile.

The quality marks are only available to the named members of the project team for use on promotional and marketing material. They are a tangible stamp you can use to demonstrate the high quality of your work and your status as an award winner. So don't forget to list everyone when you are entering your project, as we don't want anyone to miss out.

Use this in promotional material, company publications, brochures or websites.

## GOLD, SILVER, BRONZE



### SUPREME AWARD

Two Supreme Awards are awarded: one to the highest points scoring project with a project value under \$10 million, and one to the highest points scoring project with a project value over \$10 million.



### PLATINUM AWARD

Awarded to an entrant who has won five or more national titles. Platinum is awarded to an organisation only once, being the highest accolade that can be achieved in the New Zealand Commercial Project Awards.







### **GOLD**

Awarded to entries that achieve at least 90% of the points available.



### **SILVER**

Awarded to entries that achieve at least 82.5% of the points available.



### **BRONZE**

Awarded to entries that achieve at least 75% of the points available.



### **NATIONAL CATEGORY AWARD**

Awarded to the highest points scoring entrant in each category provided they have received a Gold Award.



### **VALUE AWARD**

Awarded to the entry that achieves the highest points score in each value range category.



### **ENVIRONMENTAL AND SUSTAINABLE AWARD**

Awarded at the judges' discretion for a project design with exceptional environmental features.



### **BUILDING INFORMATION MODELLING AWARD**

Awarded at the judges' discretion for use of technology that aims to shape the industry towards a more efficient and sustainable era.



### **INNOVATION AWARD**

Awarded at the judges' discretion for a project that has taken an innovative approach. Innovation could be in the field of process, design, construction, materials or technology.



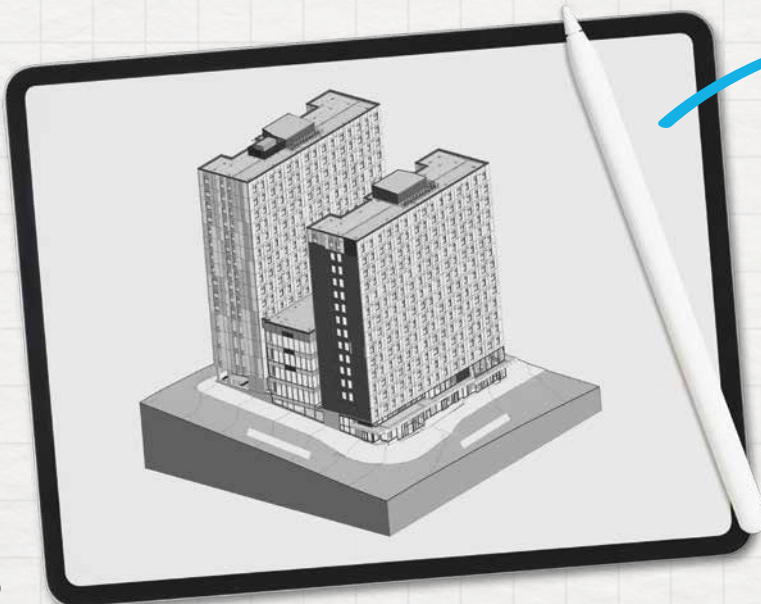
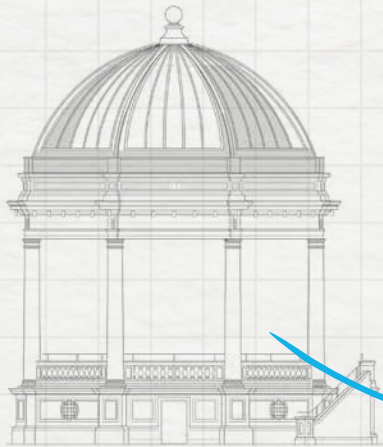
### **SPECIAL AWARD**

Awarded at the judges' discretion to an outstanding project or element of a project that they feel is worthy of recognition.

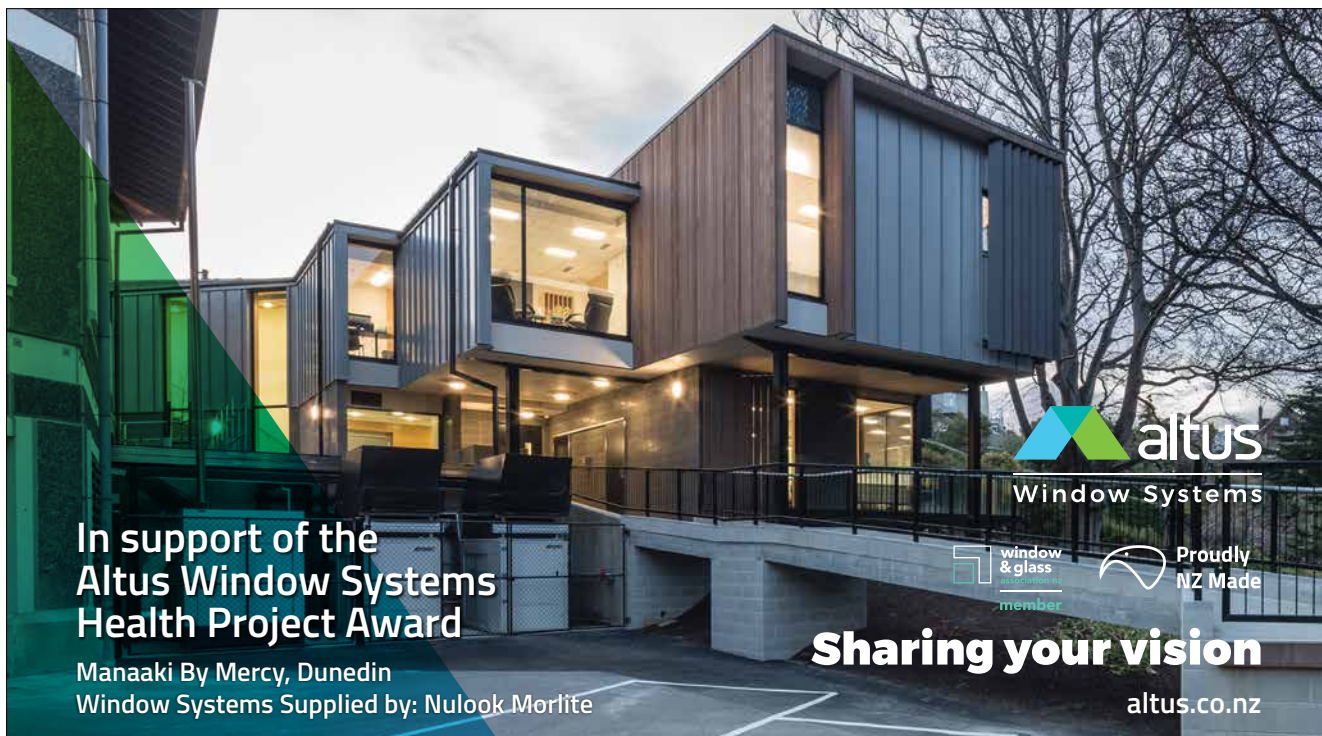


# DESIGN TO DESTINATION

Showcasing some of the amazing work that goes into the builds that enter the New Zealand Commercial Project Awards. These projects often take years of planning and countless hours of hard work to bring to life. Check out some of the drawings and the final products below!







**In support of the  
Altus Window Systems  
Health Project Award**

Manaaki By Mercy, Dunedin  
Window Systems Supplied by: Nulook Morlite

**Sharing your vision**  
altus.co.nz

**altus**  
Window Systems

window & glass  
member

Proudly  
NZ Made

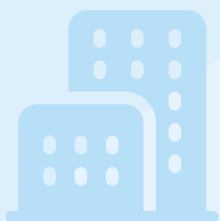
Altus Window Systems available through our exclusive Fabricator network:



## KEY DATES

### ENTRY DATES

**16** ▶ **31**  
AUG OCT



### JUDGING DATES

**FEB** ▶ **APR**  
2025 2025



### GALA DINNER

**16**  
MAY 2025



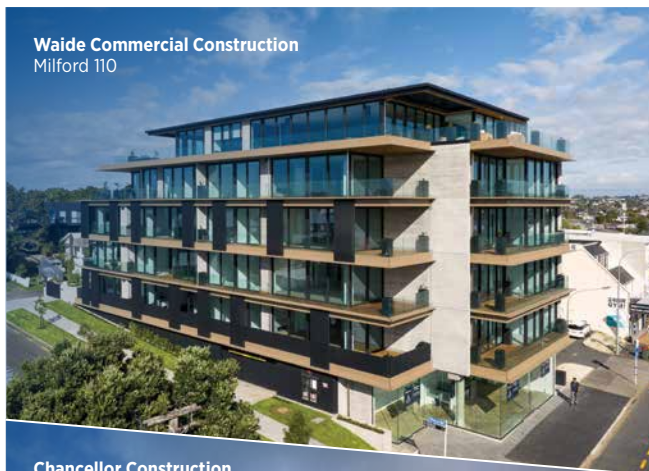
# THE CATEGORIES

Entrants choose which category their project will be entered into. Where a building project could be considered for one or more categories, the Awards Management Team will work with the entrant on deciding the most appropriate category. All entrants are automatically considered for the Value Awards, Special Award, Environmental and Sustainable Award, and BIM Award. Entrants need to “opt in” to be considered for the Innovation Award.

Please note: photos featured are from a range of entries and not necessarily from the winners identified in this section.







**Waide Commercial Construction**  
Milford 110



**Chancellor Construction**  
SELO Development



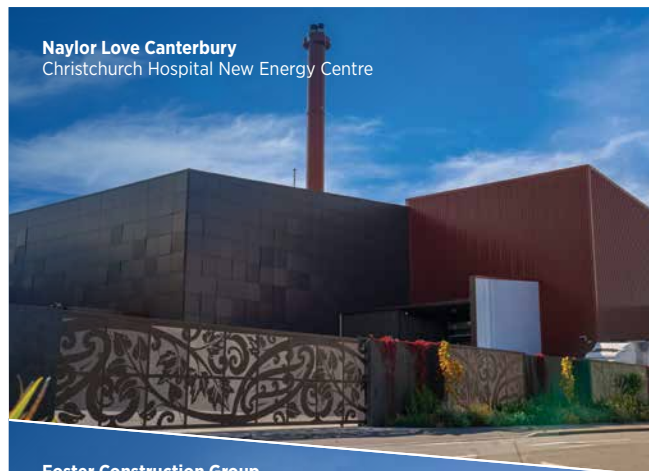
**Southbase Construction**  
Te Rangihīroa

## WINSTONE WALLBOARDS RESIDENTIAL PROJECT

Major commercial developments in the residential sector, whether apartment buildings, retirement villages, or multi-dwelling developments including repair, renovation or alteration of the same.

### PREVIOUS WINNERS

**Waide Commercial Construction** – Milford 110, 2024  
**Naylor Love Auckland** – The CAB Apartments, 2023  
**Chancellor Construction** – Kotuitui Development (Stage 2), 2022  
**Naylor Love Canterbury** – Paragon Apartments, 2021  
**Scott Construction** – Betts Apartments, 2020  
**L T McGuinness** – Wynyard Central, 2019  
**Dominion Constructors** – 585 Rothesay, 2018  
**Scarbro Construction** – Queens Residences, 2017  
**Maycroft Construction** – Marshall Court Redevelopment, 2016



**Naylor Love Canterbury**  
Christchurch Hospital New Energy Centre



**Foster Construction Group**  
Convex



**Cook Brothers Construction**  
Hihiani Radar Project,  
Christchurch Airport

## INDUSTRIAL PROJECT

Any project that is industrial in nature including repair, renovation or alteration of the same, eg: manufacturing/processing plants, wharves/bridges, tunnels/dams, warehousing facilities and farm buildings.

### PREVIOUS WINNERS

**Naylor Love Canterbury** – Christchurch Hospital New Energy Centre, 2024  
**Foster Group** – APL, 2023  
**Form Building & Developments** – Steelfort Showroom and Distribution Centre, 2022  
**Dominion Constructors** – Mainfreight Tauranga, 2021  
**Isles Construction** – AgResearch PC2 Glasshouses, 2020  
**Foster Construction** – Visy, 2019  
**Calder Stewart Construction** – Project Viking, 2018  
**Hawkins Construction** – Red Stag Sawmill, 2017  
**Dominion Constructors and Leighs Construction** (joint venture) – Mainfreight, Christchurch, 2016



**Dunlop Builders**  
The Dunlop Hub



**LT McGuinness**  
44 Bowen Street



**ICON NZ**  
Munroe Lane



## CARTERS COMMERCIAL PROJECT

This category is for offices and business spaces that are not retail in nature taking in buildings that are considered places of work in both the public and private sectors including repair, renovation or alteration of the same, eg: office blocks.

### PREVIOUS WINNERS

**Dunlop Builders** – The Dunlop Hub, 2024

**McKee Fehi Constructors** – Stewart Dawson's Corner Redevelopment, 2023

**Hawkins** – Foodstuffs North Island Head Office, 2022

**WSP** – Te Ao Nui, 2021

**Leighs Construction** – The B:Hive (Smales Farm Building 5), 2020

**L T McGuinness** – PWC Centre, 2019

**McKee-Fehi Constructors** – 22 Boulcott Street, 2018

**L T McGuinness** – The Aurora Centre, 2017

**Naylor Love Construction** – Devonport Library, 2016

**Naylor Love Dunedin**  
The Dunedin Railway Station



**Duncan Commercial Construction Limited**  
Waterloo Fire Station Alteration



**Hawkins**  
Weir House



## HERITAGE AND RESTORATION PROJECT

Whether fit out or re-cladding – this category is for commercial projects for which the primary brief was restoration, irrespective of the building's purpose.

### PREVIOUS WINNERS

**Naylor Love Dunedin** – The Dunedin Railway Station, 2024

**HRS Construction** – St Faith's Church, 2023

**L T McGuinness** – Farmers Building, 2022

**Maycroft Construction** – Old St Paul's Seismic Upgrade, 2021

**Hawkins** – Christchurch Town Hall Conservation Project, 2020

**DPA Architects** – Rose Chapel, 2019

**L T McGuinness** – St Mary of the Angels Church – Seismic Strengthening and Upgrade, 2018

**Naylor Love Construction** – Isaac Theatre Royal, 2017

**Naylor Love Construction** – Christ's College Hare Memorial Library Restoration, 2016





**It's easier doing  
business with  
people you know.**

[mitre10.co.nz/trade](https://mitre10.co.nz/trade)

**MITRE 10  
TRADE**

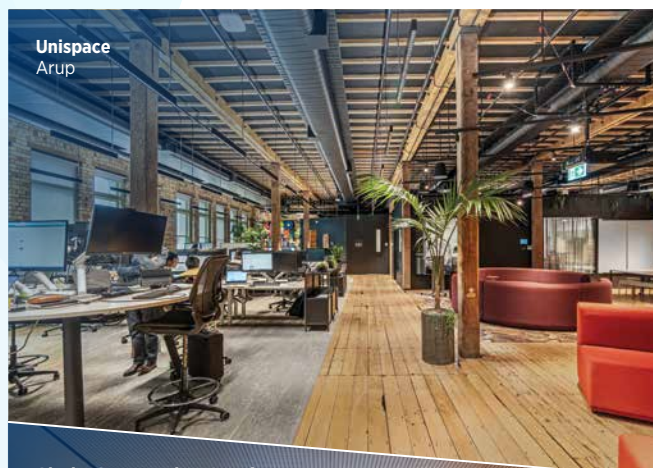


**Made in New Zealand  
For New Zealand.**

Plasterboard, locally  
made for over  
95 years.

[gib.co.nz](https://gib.co.nz)





**Unispace**  
Arup



**Alaska Construction+Interiors**  
Chapman Tripp Wellington Office



**FSL Construction & Interiors**  
Faradays

## COMMERCIAL FIT OUT

Interior fit out of an existing commercial space.

### PREVIOUS WINNERS

**Unispace** – Arup, 2024

**BLACK** – BLACK, 2023

**Hawkins** – MediaWorks Radio Fit Out, 2022

**Black Interiors** – ANZ Raranga, 2021

**Unispace** – HEB Construction, 2020

**ICL Construction** – New Plymouth District Council Civic Centre, 2019

**RCG** – Māori Television, 2018



**Canam Commercial**  
Whangārei Civic Centre



**Wilson Commercial**  
Samoa High Commission, Wellington



**Cook Brothers Construction**  
Kaikōura Fire Station

## CIVIC PROJECT

This category includes buildings that offer services to the public including repair, renovation or alteration of the same, e.g: courts, police stations, fire stations, government research facilities, public ablution blocks and ambulance facilities.

### PREVIOUS WINNERS

**Canam Commercial** – Whangārei Civic Centre, 2024

**Robinson Construction** – Lansdowne Sports Hub, 2023

**CPB Contractors** – Te Pae – Christchurch Convention and Exhibition Centre, 2022

**Naylor Love Canterbury** – Nelson Airport Terminal, 2020

**Southbase Construction** – Turanga – Christchurch Central Library, 2019

**The Fletcher Construction Company** – He Tohu Exhibition, 2018

**Scott Construction** – The Suter® Art Gallery Redevelopment, 2017

*Note: Prior to 2017, Commercial and Civic were combined into one category.*





**Leighs Construction**  
Waimarie Building



**Hawkins**  
University of Waikato – The Pā



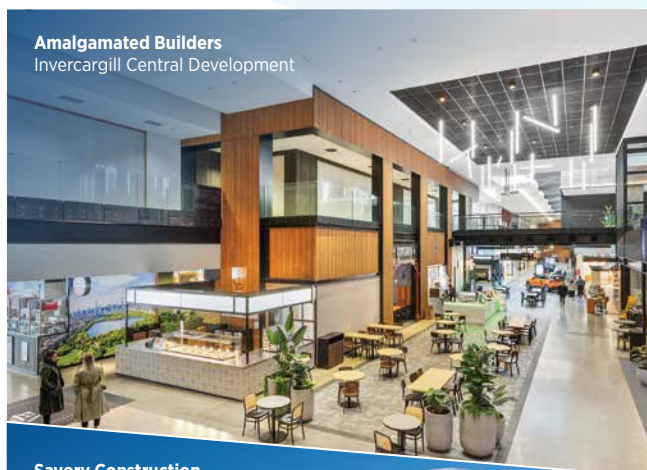
**Fat Parrot Architecture**  
Pinehurst Theatre & College 5

## SPECADVISOR EDUCATION PROJECT

Projects built for the purpose of education, from pre-school to tertiary, private training establishments (PTEs), and iwi/whānau based training developments including repair, renovation or alteration of the same.

### PREVIOUS WINNERS

**Leighs Construction** – Waimarie Building, 2024  
**Southbase Construction** – Hanleys Farm Primary School, 2023  
**ASC Architects** – TechPark, Manukau Institute of Technology, 2022  
**Naylor Love Canterbury** – Te Raekura Redcliffs School, 2021  
**Naylor Love Canterbury** – St Bede's College Chapel and Performing Arts Centre, 2020  
**N-Compass** – The Gardens School, 2019  
**Hawkins** – Rolleston College, 2018  
**Armitage Williams Construction** – St Andrew's College Centennial Chapel, 2017  
**Scarbro Construction** – University of Auckland Faculty of Engineering Research Building 906, 2016



**Amalgamated Builders**  
Invercargill Central Development



**Savory Construction**  
Mercedes Takapuna



**A J Saville Builder 2016 Limited**  
Patagonia

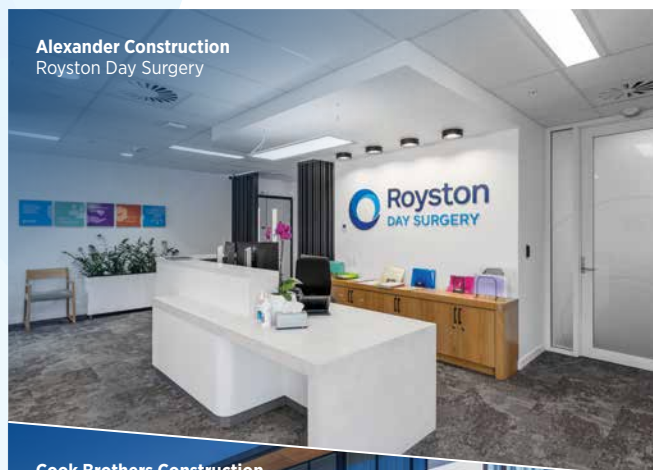
## RETAIL PROJECT

This category is only for retail projects. These may include shops or any form of retail development, where the primary purpose is direct-to-customer services. It includes repair, renovation or alteration of the same.

### PREVIOUS WINNERS

**Amalgamated Builders** – Invercargill Central Development, 2024  
**Naylor Love Central Otago** – O'Connells Mall, 2023  
**Savory Construction** – Ormiston Town Centre, 2022  
**Naylor Love Canterbury** – Ballantynes Redevelopment, 2021  
**Consortium Construction** – Riverside Farmers' Market, 2020  
**Calder Stewart Construction** – Hoyts entX, 2019  
**Naylor Love Construction** – Rydges Restaurant and Bar Refurbishment, 2018  
**WG de Gruchy Construction** – Tantalus Winery, Brewery & Restaurant, 2017  
**Livingstone Building NZ and Chow: Hill** (joint venture) – Ebbett Audi Volkswagen, 2016





**Alexander Construction**  
Royston Day Surgery



**Cook Brothers Construction**  
Canterbury Cancer Centre



**Naylor Love Wellington**  
Te Whatu Ora Urology & Renal Departments

## ALTUS WINDOW SYSTEMS HEALTH PROJECT

Projects built to provide 'direct' health services. This includes GP services, hospital developments and veterinary and specialist clinics, including repair, renovation or alteration of the same.

### PREVIOUS WINNERS

**Alexander Construction** – Royston Day Surgery, 2024

**Leighs Construction** – Waipapa, ICU Pod 4, Christchurch Hospital, 2023

**Naylor Love Canterbury** – Toka Hāpai Selwyn Health Hub, 2022

**Hawkins** – Tiaho Mai Acute Mental Health Unit (Stage 2), 2021

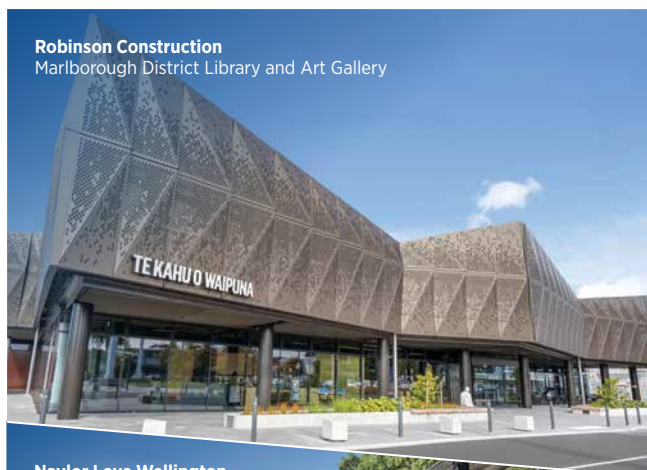
**Armstrong Downes Commercial** – Te Omanga Hospice, 2020

**Naylor Love Wellington** – Wellington Hospital ICU Expansion, 2019

**Naylor Love Construction** – Manaaki By Mercy, 2018

**Leighs Cockram JV** – Burwood Hospital Redevelopment, 2017

**Fletcher Construction** – Kathleen Kilgour Centre Radiotherapy Unit, 2016



**Robinson Construction**  
Marlborough District Library and Art Gallery



**Naylor Love Wellington**  
Wellington Zoo Snow Leopard Habitat



**Livingstone Building**  
Te Kete Aronui Rototuna Library

## TOURISM AND LEISURE PROJECT

Specifically for buildings and developments where the public utilises the facilities/space in the tourism, visitor or leisure sector including repair, renovation or alteration of the same, e.g; visitor centres, hotels, swimming pools, churches. This category **excludes** retirement villages, which should be entered into the Residential Project category.

### PREVIOUS WINNERS

**Robinson Construction** – Marlborough District Library and Art Gallery, 2024

**Icon NZ** – Voco-HIE, 2023

**HRS Construction** – Ravenscar House, 2022

**Contract Construction** – Aldersgate, 2021

**Russell Property Group & Dominion Constructors** –

Four Points by Sheraton Auckland, 2020

**Triple Star Management** – Blanket Bay Villas, 2019

**Hawkins** – Wellington International Airport – Terminal South Extension, 2018

**Arrow International (NZ)** – The Remarkables Base Building, 2017

**Triple Star Management** – Aro Ha Wellness Retreat, 2016



**CARTERS**  
Your **Building** Partner

**CARTERS** Your **Build** Partner



Proud to sponsor

## PARTNERING FOR SUCCESS

CARTERS are proud to be a core part of the building team, with you at every stage of the project, backing your success. When you succeed, then so do we.

Let's partner together.

0800 CARTERS | [www.carters.co.nz](http://www.carters.co.nz)

**150**  
YEARS

**50**  
BRANCHES

**1**  
ACCOUNT

 **SPEC  
ADVISOR**

An easily accessible one-on-one  
industry support service that makes  
product specification easier.

[specadvisor.co.nz](http://specadvisor.co.nz)

PROJECT: Rosegarden Apartments Albany  
ARCHITECTURE: Context Architects  
Specification support by SpecAdvisor





**Unispace**  
Arup, 2024



**Foster Group**  
APL, 2023



**Hawkins**  
Foodstuffs North Island Head Office, 2022



## MITRE 10 ENVIRONMENTAL AND SUSTAINABLE AWARD

Awarded at the judges' discretion for a project design with exceptional environmental features. This award recognises the relationship our man-made buildings have with the environment and the responsibility we have as an industry.

### PREVIOUS WINNERS

**Unispace** – Arup, 2024

**Foster Group** – APL, 2023

**Hawkins** – Foodstuffs North Island Head Office, 2022



**ICON NZ**  
Greys Ave Complex, 2024



**Naylor Love Canterbury**  
Mahana House Duplex, 2023



**Harnett Builders**  
Te Hononga, Hundertwasser Memorial Park, 2022



## INNOVATION AWARD

This award recognises that transformation is happening in our sector and is awarded to the project that has taken an innovative approach and achieved a positive outcome. Innovation could be in the field of process, design, construction, materials or technology.

### PREVIOUS WINNERS

**ICON NZ** – Greys Ave Complex, 2024

**Naylor Love Canterbury** – Mahana House Duplex, 2023

**Harnett Builders** – Te Hononga, Hundertwasser Memorial Park, 2022

**ASC Architects** – Eyes and Eyelids, 2021

**Naylor Love Canterbury** – Nelson Airport Terminal, 2020

**Stewart Hanna** – The Mezz Box, 2019

*Note: You need to "opt in" when entering to be considered for this award*



**Amalgamated Builders**  
Invercargill Central Development



**Apollo Projects**  
Kiwa Pools



**Holmes Construction NZ**  
New Zealand Campus of Innovation  
and Sport Performance Institute



### SPECIAL AWARD

This award may be given at the discretion of the judges for a specific outstanding project or element of a project that they feel is worthy of recognition.

#### PREVIOUS WINNERS

**Apollo Projects** – Kiwa Pools, 2024  
**Amalgamated Builders** – Invercargill Central Development, 2024  
**Holmes Construction** – New Zealand Campus of Innovation and Sport Performance Institute, 2024  
**Alaska Construction Interiors** – Cambridge Police Hub, 2023  
**Brosnan** – Karamea Area School, 2023  
**NZ Strong Group** – South East Asia Precinct, Auckland Zoo, 2023  
**Trigg Construction** – Hundertwasser Art Centre with Wairau Māori Art Gallery, 2022  
**Brosnan Construction** – Shore Junction, 2021  
**Jacobson Projects** – Tuvalu Christian Church, 2021  
**DPA Architects** – Highfield Woolshed, 2020  
**Higgs Construction** – Te Manawa Atawhai Catherine McAuley Centre, 2019  
**Form Building & Developments** – Mangatawa Tari, 2017  
**Harding Construction** – Aoraki Development Business and Tourism, 2016  
**Fletcher Construction** – Child Cancer Foundation, 2016

**Trigg Construction**  
Kennedy Point Marina Office



### VALUE AWARDS

All projects will automatically be eligible for a Value Award based on their total project value.

#### VALUE AWARD CATEGORIES

- Commercial Project Under \$1 million
- Commercial Project \$1 – \$3 million
- Commercial Project \$3 – \$10 million
- Commercial Project \$10 – \$25 million
- Commercial Project Over \$25 million

**Haydn & Rollett**  
Stuart McCutcheon House



### BUILDING INFORMATION MODELLING AWARD

Awarded at the judges' discretion for use of technology that aims to shape the industry towards a more efficient and sustainable era, and that improves the construction life cycle and identifies potential issues before they become real ones. All entries will be automatically entered into this award.

#### PREVIOUS WINNER

**Haydn & Rollett** – Stuart McCutcheon House, 2024



2024  
OVER \$10 MILLION



# BEST OF THE BEST

PAST SUPREME  
AWARD WINNERS

2024 - OVER \$10 MILLION  
**WHANGĀREI CIVIC CENTRE**  
WHANG REI  
CANAM COMMERCIAL

2024 - UNDER \$10 MILLION  
**ARUP**  
AUCKLAND  
UNISPACE

2023  
**VOCO-HIE,**  
AUCKLAND  
ICON NZ

2022  
**RAVENSCAR HOUSE,**  
CHRISTCHURCH  
HRS CONSTRUCTION

2021  
**TE RAEKURA REDCLIFFS SCHOOL,**  
CHRISTCHURCH  
NAYLOR LOVE CANTERBURY

2020  
**ST BEDE'S COLLEGE CHAPEL  
AND PERFORMING ARTS CENTRE,**  
CHRISTCHURCH  
NAYLOR LOVE CANTERBURY

2019  
**PWC CENTRE, WELLINGTON**  
L T MCGUINNESS

2018  
**PROJECT VIKING, CHRISTCHURCH**  
CALDER STEWART CONSTRUCTION

2017  
**THE REMARKABLES BASE BUILDING,**  
QUEENSTOWN  
ARROW INTERNATIONAL (NZ)

2016  
**UNIVERSITY OF AUCKLAND FACULTY OF  
ENGINEERING RESEARCH BUILDING 906,**  
AUCKLAND  
SCARBRO CONSTRUCTION

2015  
**CLYDE QUAY WHARF REDEVELOPMENT,**  
WELLINGTON  
L T MCGUINNESS



2022







2024  
UNDER \$10 MILLION



2023



2021



2020







**NEW ZEALAND  
COMMERCIAL  
PROJECT AWARDS**

Owned by

Sponsors



FOR MORE INFORMATION, VISIT  
**COMMERCIALPROJECTAWARDS.CO.NZ**