



NEW ZEALAND
COMMERCIAL
PROJECT AWARDS

2023 Entry Guide

SHOWCASE YOUR
OUTSTANDING
COMMERCIAL
CONSTRUCTION AND
THE TEAMS THAT
MADE IT HAPPEN





WELCOME

TO THE 2023 NEW ZEALAND COMMERCIAL PROJECT AWARDS

This prestigious awards programme sets the benchmark for commercial construction in New Zealand and celebrates collaboration and innovation across the building industry.

What sets these awards apart is that they focus on recognising the contribution of the whole project team, the people who brought these amazing projects to life, rather than just the building itself.

Every year we are impressed by the scope, calibre and innovation of the projects entered. The entries reflect the scale and diversity of commercial construction work being done across the country and show the industry has much to be proud of.

We are looking forward to seeing what our industry's exceptional teams have achieved and to celebrating these achievements in the 2023 New Zealand Commercial Project Awards.



David Kelly
Chief Executive
Registered Master Builders Association

Darrell Trigg
Chairman
New Zealand Commercial Project Awards

ENTRIES OPEN



**17 AUGUST 2022 –
21 OCTOBER 2022**

WHY ENTER?

- To celebrate, recognise, and thank the team who made your project happen.
- Demonstrate the quality of your team's work to the industry and beyond. This includes everyone from the building owners, architects, designers, engineers, quantity surveyors through to the contractors themselves.
- Showcase your team's capability to potential clients.
- Network and celebrate with the wider industry at the Awards Gala – an evening not to be missed.

Let's celebrate the collaboration and innovation of the entire project team.

CELEBRATE YOUR TEAM





OUR SPONSORS

A huge thank you to our family of sponsors whose ongoing support means we are able to shine a light on the best of New Zealand construction.



HEALTH PROJECT



COMMERCIAL PROJECT



EDUCATION PROJECT



RESIDENTIAL PROJECT



Resene

the paint the professionals use

COMMERCIAL FIT OUT

SHOW YOUR PRIDE IN YOUR PROJECT

The awards are based on the collaboration of the project team, innovation, quality and how you overcome the challenges of the project together. It is not about the size of the project or budget.

PLAN

ENTRIES OPEN ON WEDNESDAY 17 AUGUST 2022.



It's time to start planning your entry and talking to the wider project team.

These awards are open to all NZ based commercial construction project partners including: contractors, architects, building owners, engineers and quantity surveyors etc. **You do not need to be a member of Registered Master Builders to enter.**

Got questions about the competition or a potential entry? Call or email us. We're always happy to help.

Ph: 04 385 8999

Email:

info@commercialprojectawards.co.nz



All entries must have been completed no earlier than **21 October 2020** and must have a **Certificate of Practical Completion** on the date of entries closing.

SUBMIT

ENTRIES CLOSE ON FRIDAY 21 OCTOBER 2022.



Enter at
commercialprojectawards.co.nz

Each entry must include the **Construction Company**, the **Owner** and the **Designer** and we encourage you to include other team members such as **Engineers**, **Quantity Surveyors**, etc.

The Commercial Project Awards are all about celebrating the collective efforts of our building professionals.

ENTRY FEES

Projects Under \$3 Million:

\$600 + gst per entry, plus professional photography fee of \$500 + gst (\$1265 inclusive of gst)

Projects Over \$3 Million:

\$1200 + gst per entry, plus professional photography fee of \$500 + gst (\$1955 inclusive of gst)

Multi entry discount: For all third and subsequent entries a 15% discount will be applied

IMPRESS

JUDGING TAKES PLACE FROM FEBRUARY 2023 TO APRIL 2023.



They'll be looking at the collaboration, quality, and innovation of your project – there will also be interviews with the team so you can demonstrate how you worked together to deliver an amazing result.

All entries are judged by a panel of two experienced construction industry judges. Judging includes a site visit and an interview with team members.



 **TEAMWORK**

 **QUALITY**

 **INNOVATION**



KEY DATES

ENTRY DATES

17 → **21**
AUGUST OCTOBER

JUDGING DATES

FEBRUARY → **APRIL**
2023 2023

GALA DINNER

MAY
2023 

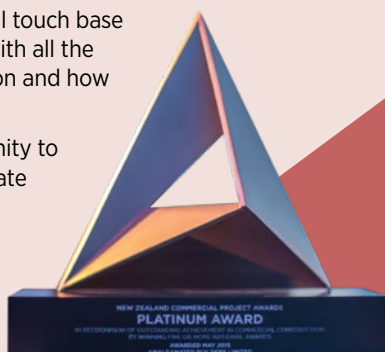


CELEBRATE

IT'S TIME TO CELEBRATE!

After judging, you can sit back and relax until it's time to get the team together in May 2023 to celebrate your project. We will touch base closer to the time with all the evening's information and how to purchase tickets.

It's a great opportunity to meet up and celebrate with the industry.



PROMOTE

DISPLAY YOUR QUALITY MARKS AND TELL THE WORLD ABOUT YOUR SUCCESS. WE WILL BE!

And of course, start thinking about your entries for 2024...



TO FIND OUT MORE

To find out more information about the awards, and the entry and judging process, visit: commercialprojectawards.co.nz or contact:

Ph: 04 385 8999

Email: info@commercialprojectawards.co.nz

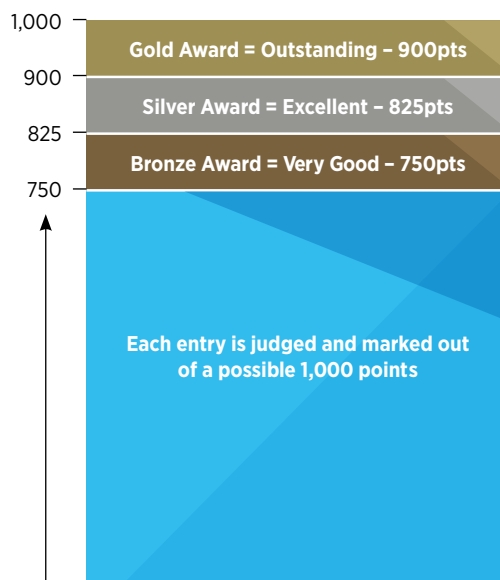
QUALITY MARKS

The New Zealand Commercial Project Awards are an exciting opportunity for you to promote your business, celebrate the work of your team and grow your profile.

The quality marks are only available to the named members of the project team for use on promotional and marketing material. They are a tangible stamp you can use to demonstrate the high quality of your work and your status as an award winner. So don't forget to list everyone when you are entering your project, as we don't want anyone to miss out.

Use this in promotional material, company publications, brochures or websites.

GOLD, SILVER, BRONZE



SUPREME AWARD

Awarded to the highest points scoring Category Winner overall.



PLATINUM AWARD

Awarded to an entrant who has won five or more national titles. Platinum is awarded to an organisation only once, being the highest accolade that can be achieved in the New Zealand Commercial Project Awards.



GOLD

Awarded to entries that achieve at least 90% of the points available.



SILVER

Awarded to entries that achieve at least 82.5% of the points available.



BRONZE

Awarded to entries that achieve at least 75% of the points available.



NATIONAL CATEGORY AWARD

Awarded to the highest points scoring entrant in each category provided they have received a Gold Award.



VALUE AWARD

Awarded to the entry that achieves the highest points score in each value range category.



SUSTAINABLE AND ENVIRONMENTAL AWARD

Awarded at the judges' discretion for a project design with exceptional environmental features.



BUILDING INFORMATION MODELLING AWARD

Awarded at the judges' discretion for use of technology that aims to shape the industry towards a more efficient and sustainable era.



INNOVATION AWARD

Awarded at the judges' discretion for a project that has taken an innovative approach. Innovation could be in the field of process, design, construction, materials or technology.



SPECIAL AWARD

Awarded at the judges' discretion to an outstanding project or element of a project that they feel is worthy of recognition.

PREVIOUS ENTRIES

Celebrating commercial projects right across the country – from the Far North to Rakiura Stewart Island





THE CATEGORIES

Entrants choose which category their project will be entered into. Where a building project could be considered for one or more categories, the Awards Management Team will work with the entrant on deciding the most appropriate category. All entrants are automatically considered for the Value Awards, Special Award, Sustainable and Environmental Award, and BIM Award. Entrants need to “opt in” to be considered for the Innovation Award.

Please note: photos featured are from a range of entries and not necessarily from the winners identified in this section.



WINSTONE WALLBOARDS RESIDENTIAL PROJECT

Major commercial developments in the residential sector, whether apartment buildings, retirement villages, or multi-dwelling developments including repair, renovation or alteration of the same.

PREVIOUS WINNERS

Chancellor Construction – Kotuitui Development (Stage 2), 2022 (top photo)

Naylor Love Canterbury – Paragon Apartments, 2021

Scott Construction – Betts Apartments, 2020

L T McGuinness – Wynyard Central, 2019

Dominion Constructors – 585 Rothesay, 2018

Scarbro Construction – Queens Residences, 2017

Maycroft Construction – Marshall Court Redevelopment, 2016

L T McGuinness – Clyde Quay Wharf Redevelopment, 2015

Hawkins Construction South Island – Christchurch Temporary Accommodation, 2013



INDUSTRIAL PROJECT

Any project that is industrial in nature including repair, renovation or alteration of the same, ie: manufacturing/processing plants, wharves/bridges, tunnels/dams, warehousing facilities and farm buildings.

PREVIOUS WINNERS

Form Building & Developments – Steelfort Showroom and Distribution Centre, 2022 (top photo)

Dominion Constructors – Mainfreight Tauranga, 2021

Isles Construction – AgResearch PC2 Glasshouses, 2020

Foster Construction – Visy, 2019

Calder Stewart Construction – Project Viking, 2018

Hawkins Construction – Red Stag Sawmill, 2017

Dominion Constructors and Leighs Construction (joint venture) – Mainfreight, Christchurch, 2016

Livingstone Building New Zealand – Avantidrome National Cycling Centre of Excellence, 2015

Hawkins Construction South Island – Christchurch Temporary Stadium, 2014

Hawkins Construction South Island – Forsyth Barr Stadium, 2013

WHAT'S NEW FOR 2023?

We are excited to announce a new permanent fixture in our Awards Categories, the BIM Award (Building Information Modelling).

Awarded at the judges' discretion for use of technology that aims to shape the industry towards a more efficient and sustainable era, and that improves the construction life cycle and identifies potential issues before they become real ones. All entries will be automatically entered into this award.

Professional Photography for ALL entries.

All entries will now be photographed by our professional photographers. This will ensure consistency in the quality of photos across the competition. Please note the entry fee has not changed, however the photography fee is now a mandatory cost.



altus
Window Systems

**Altus Window Systems
Tourism and Leisure Project Award**

Mt Isthmus by Brosnan Construction
Supplied by: Vistalite Otago - E13 Performance Windows

 **Proudly
NZ Made**

Sharing your vision
altus.co.nz

Altus Window Systems Fabricators:





CARTERS COMMERCIAL PROJECT

This category is for offices and business spaces that are not retail in nature taking in buildings that are considered places of work in both the public and private sectors including repair, renovation or alteration of the same, ie: office blocks.

PREVIOUS WINNERS

Hawkins – Foodstuffs North Island Head Office, 2022 (top photo)

WSP – Te Ao Nui, 2021

Leighs Construction – The B:Hive (Smales Farm Building 5), 2020

L T McGuinness – PWC Centre, 2019

McKee-Fehl Constructors – 22 Boulcott Street, 2018

L T McGuinness – The Aurora Centre, 2017

Naylor Love Construction – Devonport Library, 2016

Fletcher Construction – Norwest on Victoria, 2015

Transfield Services McConnell Dowell (joint venture) – Lower Hatea River Crossing, 2014

Hawkins Construction South Island – Christchurch Civic Building, 2013



HERITAGE AND RESTORATION PROJECT

Whether fit out or re-cladding – this category is for commercial projects for which the primary brief was restoration, irrespective of the building's purpose.

PREVIOUS WINNERS

LT McGuinness – Farmers Building, 2022 (top photo)

Maycroft Construction – Old St Paul's Seismic Upgrade, 2021

Hawkins – Christchurch Town Hall Conservation Project, 2020

DPA Architects – Rose Chapel, 2019

L T McGuinness – St Mary of the Angels Church – Seismic Strengthening and Upgrade, 2018

Naylor Love Construction – Isaac Theatre Royal, 2017

Naylor Love Construction – Christ's College Hare Memorial Library Restoration, 2016

McKee Fehl Constructors – 15 Stout Street, 2015

Bushnell Builders – Strowan House Earthquake Repairs, 2014

Humphries Construction – Blacksheepdesign, 2013

Keep interior wood natural not naked

Protect the raw beauty of timber without changing the look, with **Resene Aquaclear Natural**.



Contact your Resene representative or email specifier@resene.co.nz to view a sample.

At Resene we've got everything you need for your timber projects, inside or out!

Resene

the woodcare the professionals use

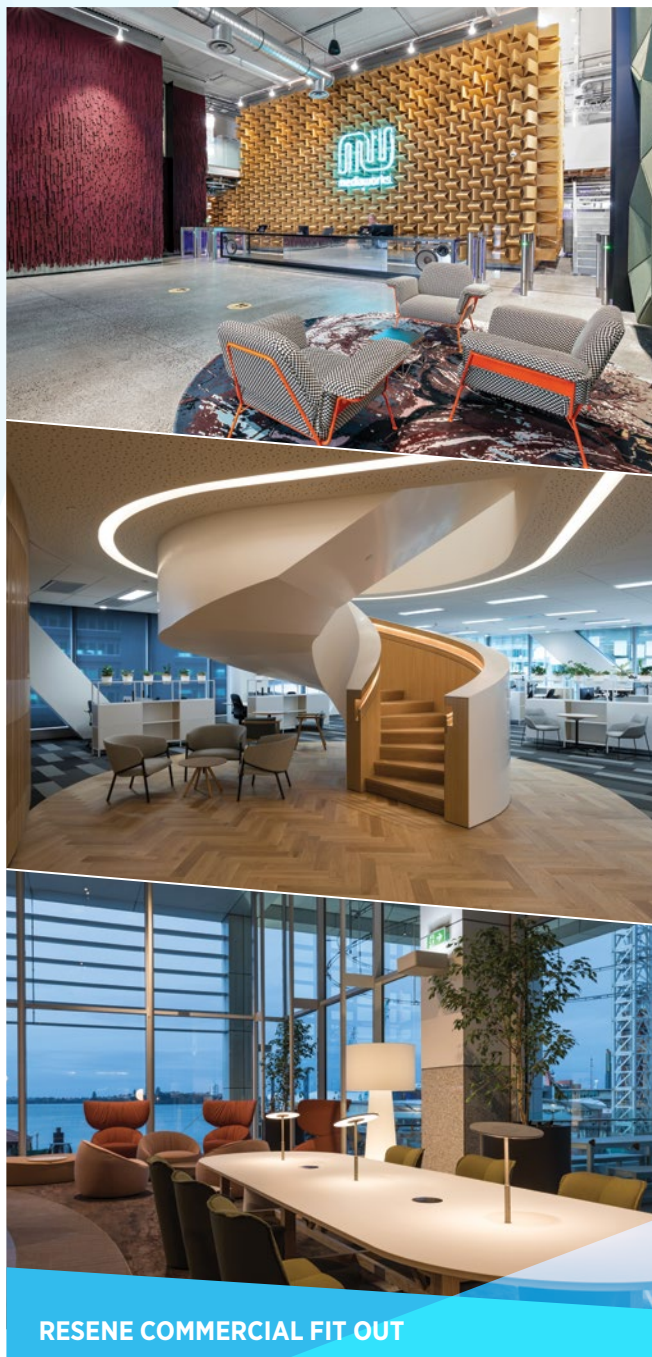
Plasterboard and Systems

Tested and guaranteed for your peace of mind.

gib.co.nz



**Plasterboard
Locally Made**



RESENE COMMERCIAL FIT OUT

Interior fit out of an existing commercial space.

PREVIOUS WINNERS

Hawkins – MediaWorks Radio Fit Out, 2022 (top photo)

Black Interiors – ANZ Raranga, 2021

Unispace – HEB Construction, 2020

ICL Construction – New Plymouth District Council Civic Centre, 2019

RCG – Māori Television, 2018



CIVIC PROJECT

This category includes buildings that offer services to the public including repair, renovation or alteration of the same, e.g: courts, police stations, fire stations, government research facilities, public ablution blocks and ambulance facilities.

PREVIOUS WINNERS

CPB Contractors – Te Pae - Christchurch Convention and Exhibition Centre, 2022 (top photo)

Naylor Love Canterbury – Nelson Airport Terminal, 2020

Southbase Construction – Turanga – Christchurch Central Library, 2019

The Fletcher Construction Company – He Tohu Exhibition, 2018

Scott Construction – The Suter® Art Gallery Redevelopment, 2017

Note: Prior to 2017, Commercial and Civic were combined into one category.



SPECADVISOR EDUCATION PROJECT

All projects built for the purpose of education, from pre-school to tertiary, private training establishments (PTEs), and iwi/whānau based training developments including repair, renovation or alteration of the same.

PREVIOUS WINNERS

ASC Architects - TechPark, Manukau Institute of Technology, 2022 (top photo)

Naylor Love Canterbury - Te Raekura Redcliffs School, 2021

Naylor Love Canterbury - St Bede's College Chapel and Performing Arts Centre, 2020

N-Compass - The Gardens School, 2019

Hawkins - Rolleston College, 2018

Armitage Williams Construction - St Andrew's College Centennial Chapel, 2017

Scarbro Construction - University of Auckland Faculty of Engineering Research Building 906, 2016

Chow Hill Architects - Wintec Engineering and Trades Facility, 2015

Fletcher Construction - Building + Interiors - AUT Sir Paul Reeves Building, 2014

Field & Hall - Scots College - Creative and Performing Arts Centre, 2013



RETAIL PROJECT

This category is only for retail projects. These may include shops or any form of retail developments, where the primary purpose is direct-to-customer services. It includes repair, renovation or alteration of the same.

PREVIOUS WINNERS

Savory Construction - Ormiston Town Centre, 2022 (top photo)

Naylor Love Canterbury - Ballantynes Redevelopment, 2021

Consortium Construction - Riverside Farmers' Market, 2020

Calder Stewart Construction - Hoyts entX, 2019

Naylor Love Construction - Rydges Restaurant and Bar Refurbishment, 2018

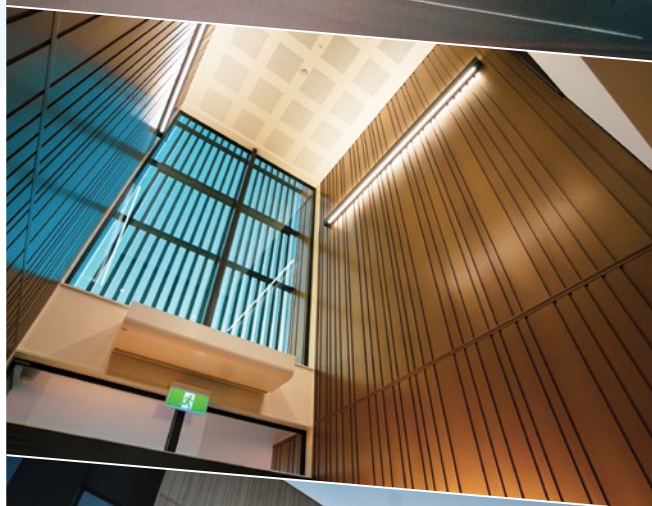
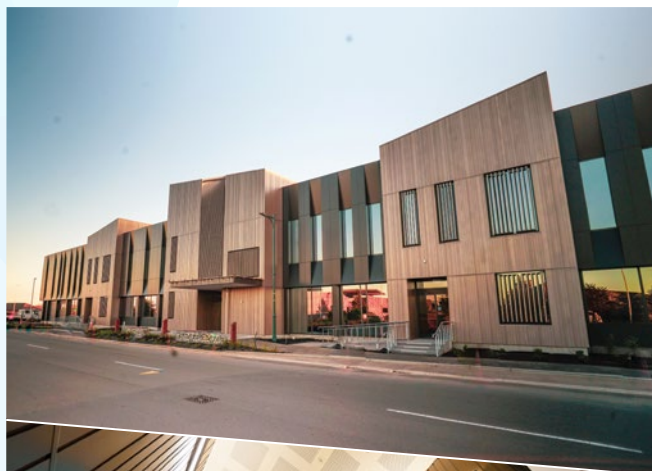
WG de Gruchy Construction - Tantalus Winery, Brewery & Restaurant, 2017

Livingstone Building NZ and Chow:Hill (joint venture) - Ebbett Audi Volkswagen, 2016

Naylor Love Construction - Masu Restaurant, 2015

Robinson Construction - Pak'n Save Marlborough, 2014

Leighs Construction - Kaiapoi New World Supermarket, 2013



ALTUS WINDOW SYSTEMS HEALTH PROJECT

All projects built to provide 'direct' health services should be entered into the Health Project category. This includes GP services, hospital developments and veterinary and specialist clinics, including repair, renovation or alteration of the same.

PREVIOUS WINNERS

Naylor Love Canterbury - Toka Hāpai Selwyn Health Hub, 2022 (photos above)

Hawkins - Tiaho Mai Acute Mental Health Unit (Stage 2), 2021

Armstrong Downes Commercial - Te Omanga Hospice, 2020

Naylor Love Wellington - Wellington Hospital ICU Expansion, 2019

Naylor Love Construction - Manaaki By Mercy, 2018

Leighs Cockram JV - Burwood Hospital Redevelopment, 2017
Fletcher Construction - Kathleen Kilgour Centre Radiotherapy Unit, 2016

Leighs Construction - Christchurch Eye Surgery, 2015

Leighs Construction - CDHB Christchurch Hospital Parkside Wards and Acute Medical Assessment Unit, 2014

D Stevens - St John Ambulance Gisborne, 2013



TOURISM AND LEISURE PROJECT

Specifically for buildings and developments where the public utilises the facilities/space in the tourism, visitor or leisure space including repair, renovation or alteration of the same, e.g; visitor centres, hotels, swimming pools, churches. This category **excludes** retirement villages, which should be entered into the Residential Project category.

PREVIOUS WINNERS

HRS Construction - Ravenscar House, 2022 (top photo)

Contract Construction - Aldersgate, 2021

Russell Property Group & Dominion Constructors - Four Points by Sheraton Auckland, 2020

Triple Star Management - Blanket Bay Villas, 2019

Hawkins - Wellington International Airport - Terminal South Extension, 2018

Arrow International (NZ) - The Remarkables Base Building, 2017

Triple Star Management - Aro Ha Wellness Retreat, 2016

Leighs Construction - Botanic Gardens Visitor Centre, 2015

Amalgamated Builders - Puzzling World Sculptillusion Gallery, 2014

Amalgamated Builders - The Rippon Hall, 2013

CARTERS
Your **Building** Partner

PARTNERING FOR SUCCESS

CARTERS are proud to be a core part of the building team, with you at every stage of the project, backing your success. When you succeed, then so do we.

Let's partner together.

Proud to sponsor



0800 CARTERS | www.carters.co.nz

150
YEARS

50
BRANCHES

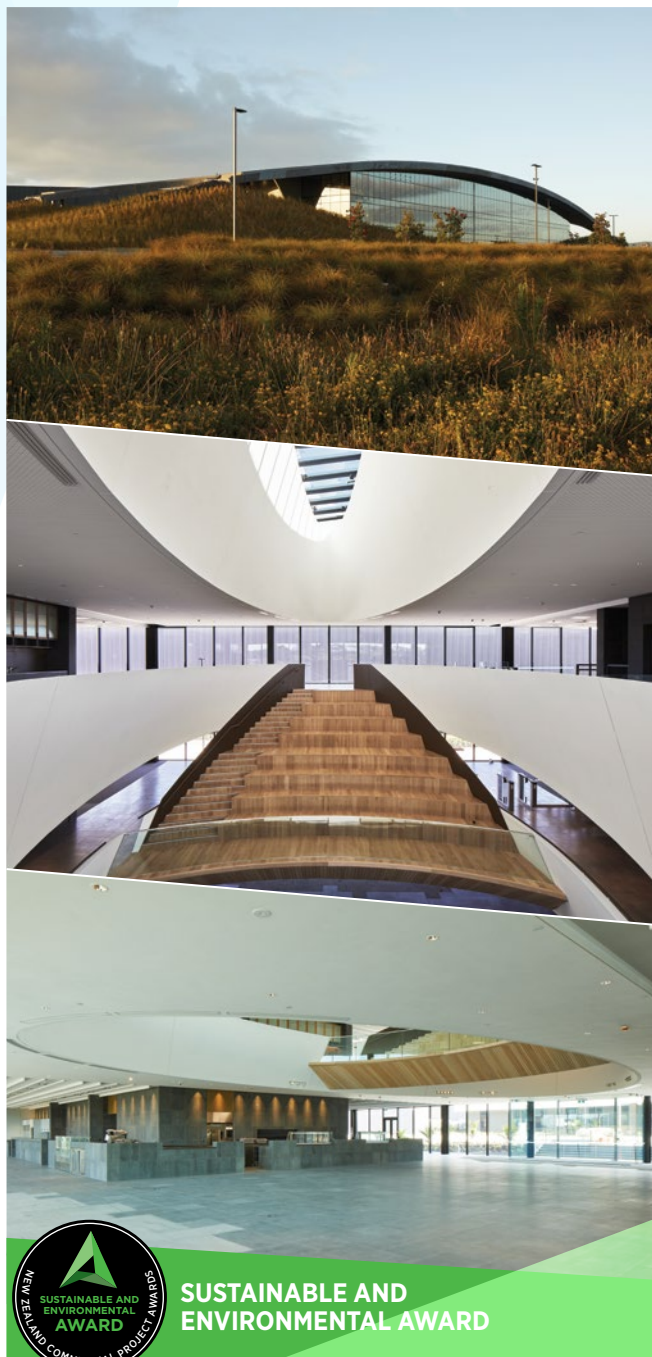
1
ACCOUNT

PRODUCTSPEC[®]
SMARTSPEC[®]

MyProjects

The easy and safe way to manage your
product and project information.
It's free!

Find out more at
myprojects.co.nz



SUSTAINABLE AND ENVIRONMENTAL AWARD

Awarded at the judges' discretion for a project design with exceptional environmental features. This award recognises the relationship our man-made buildings have with the environment and the responsibility we have as an industry.

PREVIOUS WINNERS

Hawkins – Foodstuffs North Island Head Office, 2022 (photos above)



INNOVATION AWARD

This award recognises that transformation is happening in our sector and is awarded to the project that has taken an innovative approach and achieved a positive outcome. Innovation could be in the field of process, design, construction, materials or technology.

PREVIOUS WINNERS

Harnett Builders – Te Hononga, Hundertwasser Memorial Park, 2022 (top photo)

ASC Architects – Eyes and Eyelids, 2021 (middle photo)

Naylor Love Canterbury – Nelson Airport Terminal, 2020 (bottom photo)

Stewart Hanna – The Mezz Box, 2019

Note: You need to "opt in" when entering to be considered for this award



SPECIAL AWARD

This award may be given at the discretion of the judges for a specific outstanding project or element of a project that they feel is worthy of recognition.

PREVIOUS WINNERS

Trigg Construction – Hundertwasser Art Centre with Wairau Māori Art Gallery, 2022 (top photo)

Brosnan Construction – Shore Junction, 2021 (middle photo)

Jacobson Projects – Tuvalu Christian Church, 2021 (bottom photo)

DPA Architects – Highfield Woolshed, 2020

Higgs Construction – Te Manawa Atawhai Catherine McAuley Centre, 2019

Form Building & Developments – Mangatawa Tari, 2017

Harding Construction – Aoraki Development Business and Tourism, 2016

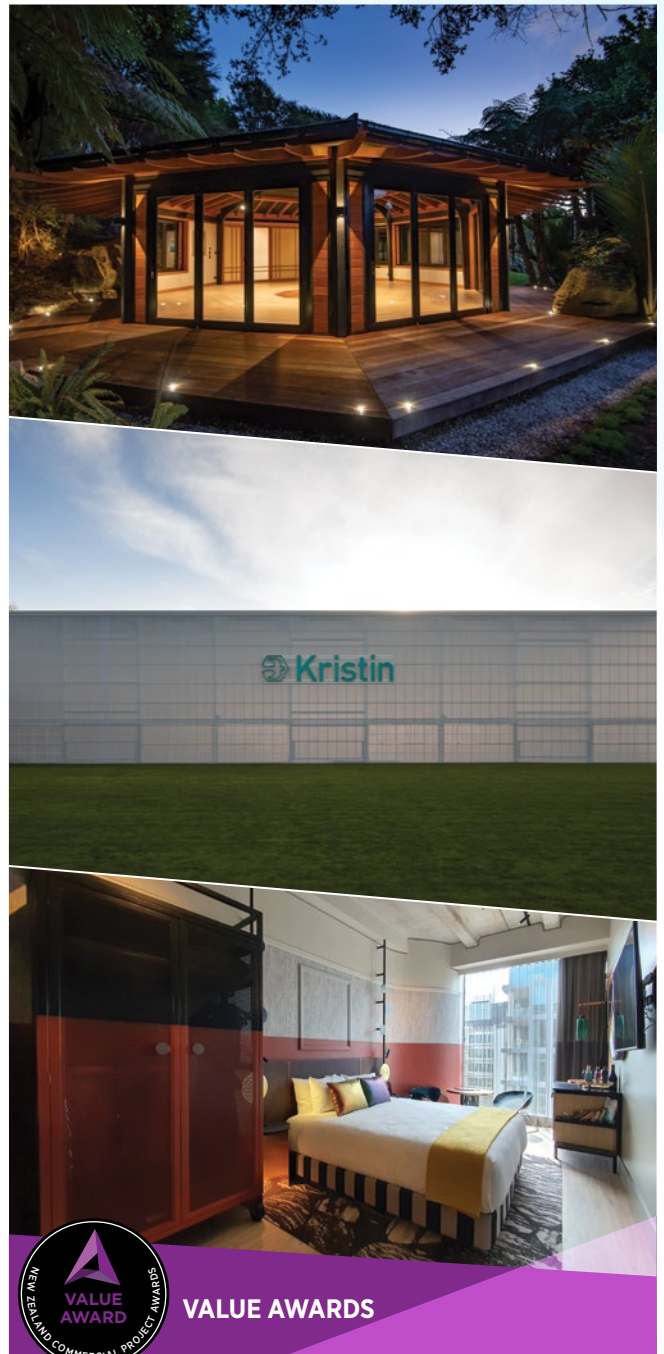
Fletcher Construction – Child Cancer Foundation, 2016

Livingstone Building New Zealand – Avantidrome National Cycling Centre of Excellence, 2015

Leighs Construction – CDHB Christchurch Hospital Parkside Wards and Acute Medical Assessment Unit, 2014

Crowe Construction & Associates – Te Takere, 2014

Maycroft Construction – Kimi Ora School, 2013



VALUE AWARDS

All projects will automatically be eligible for a Value Award based on their total project value.

VALUE AWARD CATEGORIES

- Commercial Project Under \$1 million
- Commercial Project \$1 – \$3 million
- Commercial Project \$3 – \$10 million
- Commercial Project \$10 – \$25 million
- Commercial Project Over \$25 million



BEST OF THE BEST

PAST SUPREME AWARD WINNERS

2022

RAVENSCAR HOUSE,
CHRISTCHURCH
HRS CONSTRUCTION

2021

TE RAEKURA REDCLIFFS SCHOOL,
CHRISTCHURCH
NAYLOR LOVE CANTERBURY

2020

**ST BEDE'S COLLEGE CHAPEL
AND PERFORMING ARTS CENTRE,**
CHRISTCHURCH
NAYLOR LOVE CANTERBURY

2019

PWC CENTRE, WELLINGTON
L T MCGUINNESS

2018

PROJECT VIKING, CHRISTCHURCH
CALDER STEWART CONSTRUCTION

2017

THE REMARKABLES BASE BUILDING,
QUEENSTOWN
ARROW INTERNATIONAL (NZ)

2016

**UNIVERSITY OF AUCKLAND FACULTY OF
ENGINEERING RESEARCH BUILDING 906,**
AUCKLAND
SCARBRO CONSTRUCTION

2015

CLYDE QUAY WHARF REDEVELOPMENT,
WELLINGTON
L T MCGUINNESS

2014

LOWER HATEA RIVER CROSSING,
WHANGAREI
TRANSFIELD SERVICES AND MCCONNELL
DOWELL JOINT VENTURE

2013

FORSYTH BARR STADIUM, DUNEDIN
HAWKINS CONSTRUCTION SOUTH ISLAND



2019



2021



2020



2018



2017





**NEW ZEALAND
COMMERCIAL
PROJECT AWARDS**

Owned by

Sponsors



FOR MORE INFORMATION, VISIT
COMMERCIALPROJECTAWARDS.CO.NZ