

AWARD WINNING APPROACHES

# Foodstuffs North Island Head Office

Friday 26 August 2022





- 9,000m2 office building at The Landing Business Park, Auckland Airport
- 6 Green Star – Office Built v3 Certified Rating – representing World Leadership
- Architecturally designed curved roof with Glass Reinforced Concrete (GRC) soffits and fascia panels
- Elliptical atrium with a skylight and tiered bleacher seating suspended between levels 1 and 2
- Delivered one month ahead of programme





Long lead item

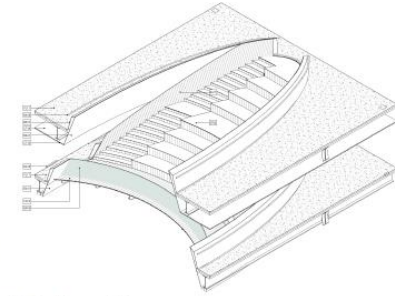
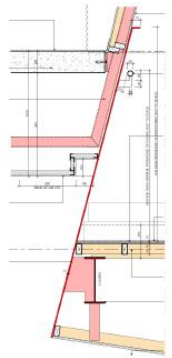
Panels weigh 900kg each

Coordination via BIM required

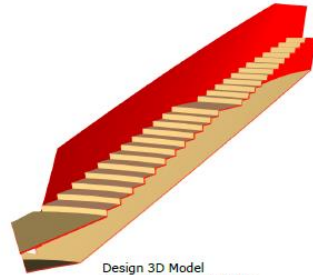




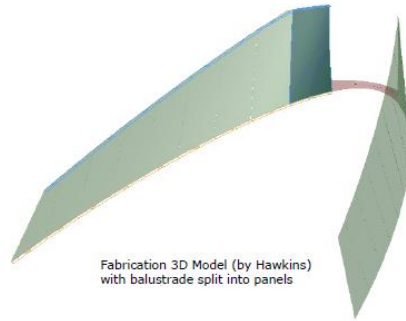
Again, extensive use of BIM required



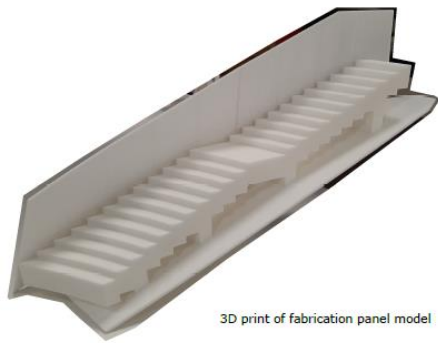
Design Documentation



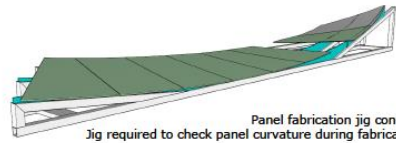
Design 3D Model  
Single balustrade surface



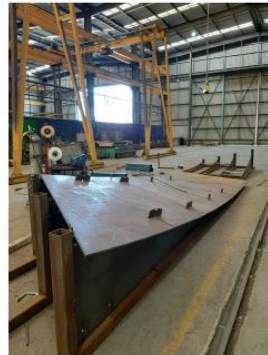
Fabrication 3D Model (by Hawkins)  
with balustrade split into panels



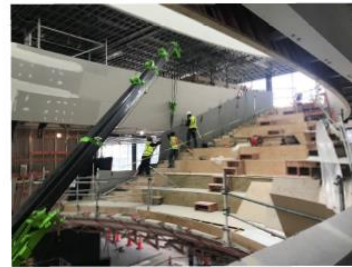
3D print of fabrication panel model



Panel fabrication jig concept  
Jig required to check panel curvature during fabrication



Pannels on jig during fabrication



Panel installation on site



10mm thick curved steel balustrade

Plywood top and bottom plates for each floor  
balustrade laser cut straight from the 3D model



Monk Mackenzie's vision for the building to integrate with the land created engineering challenges associated with the 10-metre earth bunds which really pushed the boundaries of slope stability design

Complex geotechnical treatment of the ground beneath office and bunds was required to mitigate differential settlement

The clay fill was sourced from a nearby stockpile and trucked onto site





A large-scale photovoltaic array on the distribution centre roof generates renewable energy from the sun for both the office and distribution centre

An energy efficient façade and the insulation in the roof and walls have been designed to suit the high internal gain within the building

An extra 4% of the construction budget was expended on environmental features

Rainwater harvesting is included for non-potable toilet flushing





# Our 'award winning' approaches

Team Culture



Zero Harm



Working Collaboratively

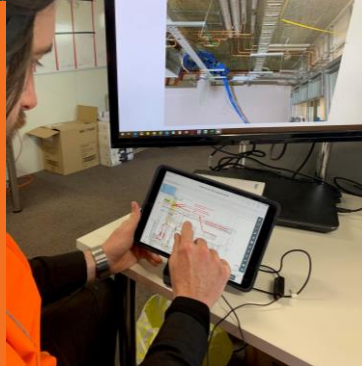


Thought Leadership

Planning



BIM



Partnership

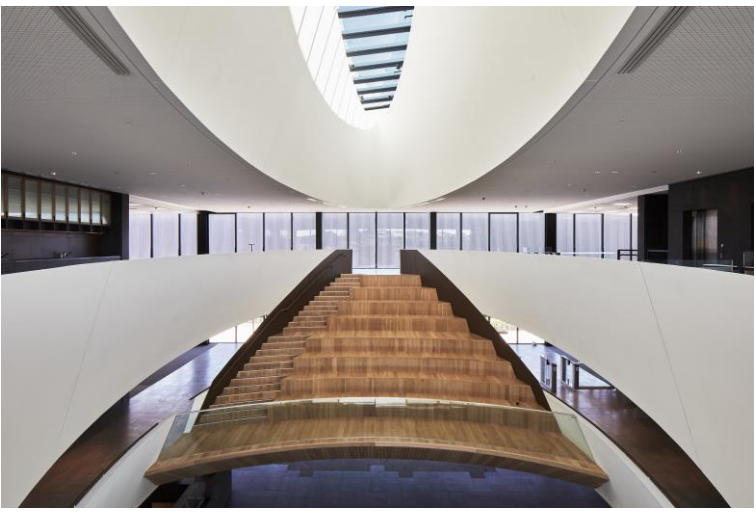
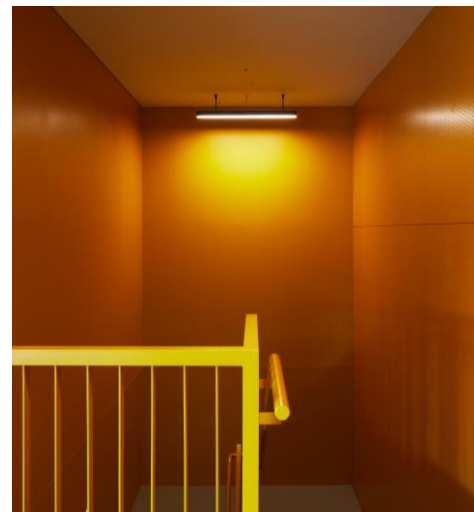














# Questions?

